



IB  
BY  
BB

# Demystifying Investing in Global Markets for India Residents

July 18, 2018

 **InteractiveBrokers**

# Agenda

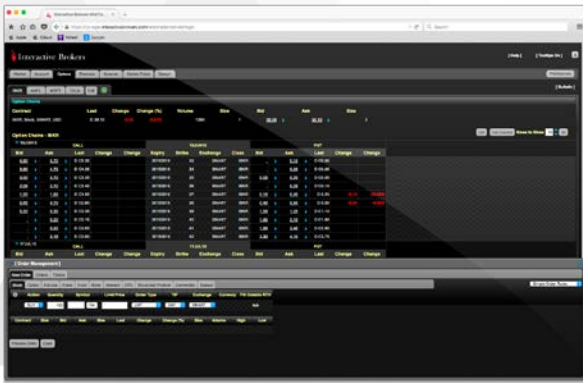
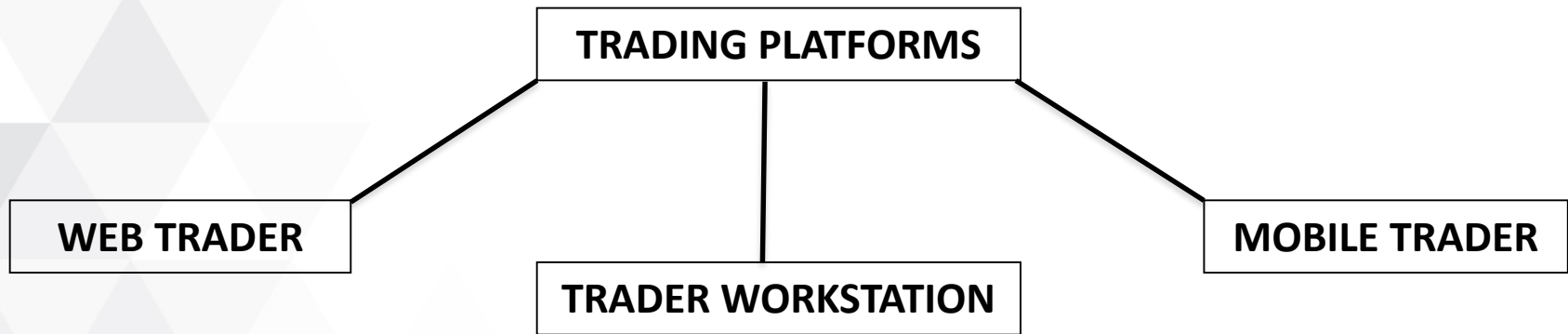
- An overview of Interactive Brokers
  - Introduction to Interactive Brokers
  - Trading Technology available
  - Pricing
- The Reserve Bank of India's liberalized remittance scheme
- Filling up an A2 form for remitting money outside of India
- Understanding the dual account structure for trading the India and global markets
- A walk through of the Trader Workstation

IBKR

# Introduction to Interactive Brokers

- Founded **over 40 years ago** and is currently headquartered in Greenwich, Connecticut in the USA.
- Member on over **100 markets** across **25 countries**.
- Over **US\$ 6 billion** in equity capital with a **BBB+** rating from S&P and with a stable outlook.
- We have reported positive earnings for over 20 consecutive years.
- IB Group affiliates are regulated by SEC, FINRA, NYSE, FCA and other regulatory agencies around the world.
- Offices in USA, Switzerland, Canada, Hong Kong, UK, Australia, Hungary, Russia, Japan, India, China and Estonia.

# Trading Technology



# Pricing – Global Markets

FLAT **US\$ 0.005** PER SHARE FOR US EQUITIES

FLAT BROKERAGE OF **0.10%** OF TRADE VALUE FOR EQUITIES IN AUSTRIA, BELGIUM, FRANCE, GERMANY (EX SWB), ITALY, NETHERLANDS, POLAND, SPAIN ETC.



**LOW COST & BEST EXECUTION\***

FLAT BROKERAGE OF **0.08%** OF TRADE VALUE FOR EQUITIES IN JAPAN, HK, SHANGHAI CROSS CONNECT, AUSTRALIA AND SINGAPORE.

GBP **6** FOR UP TO GBP 50,000 TRADE VALUE. FOR TRADES GREATER THAN GBP 50,000, GBP 6 + 0.05% OF INCREMENTAL TRADE VALUE

# Pricing – India Markets

Product	Standard	Minimum per order	Maximum per order
Stocks <sup>1</sup>	1 bps	INR 6	INR 20
Options <sup>2</sup>			
Futures <sup>3</sup>			

1. Up to per order value of INR 1,000,000 for stocks. Portions of order above INR 1,000,000 will be charged 2 bps.
2. For first 100 lots of futures and options. Portion of order above 100 lots will be charged at INR 5 per lot.
3. The maximum per order for NRI's will be INR 150.





# The Reserve Bank of India's liberalized remittance scheme

- RBI's LRS was – launched on February 4<sup>th</sup> 2004.
- The LRS was launched to facilitate resident individuals to remit funds abroad for permitted current or capital account transactions or a combination of both.
- Under the LRS, Authorized Dealers may freely allow remittances by resident individuals up to US\$ 250,000 per financial year.
- The LRS is not available to corporates, partnership firms, HUF's, Trusts and etc.
- The LRS is available to all resident individuals including minors.
- All other transactions which are otherwise not permissible under FEMA and those in the nature of margins or margin calls to overseas exchanges / overseas counterparty are not allowed under the LRS.

# Dual account structure

- Interactive Brokers Group offers a dual account structure for India residents.
- This account structure allows India resident to open one account with Interactive Brokers LLC and another account with Interactive Brokers (India) Pvt Ltd.
- The account with IB LLC is to invest in stocks and ETF's listed on 100 markets across 25 countries and the account with IB India is to trade on the National Stock Exchange of India.
- These two accounts are not cross marginable that means that they are funded separately and are treated as completely separate accounts and no money or assets can be transferred between these two accounts.
- The advantage of opening a dual account is that you would have a single user name and password to access both the accounts i.e. ease of access.
- You can easily toggle between the two accounts on the trading platform as well as the back office tool called account management for downloading reports and etc.



# Introduction to the Trader Workstation

- Downloading the TWS
- Logging in to the TWS
- Adding symbols and creating watch lists
- Placing a trade on the TWS
- Monitoring a trade
- The account window of the TWS
- The trade log window of the TWS

IBKR

# Thank You!

Ankit Shah

Director of Sales

Interactive Brokers (India) Pvt Ltd

Tel: +91 22 61289836

E-mail: [ashah@interactivebrokers.com](mailto:ashah@interactivebrokers.com)

IBKR

# Disclosures

*INTERACTIVE BROKERS (INDIA) PVT. LTD. is a member of NSE, BSE & NSDL. Regn. No. NSE: INB/F/E 231288037 (CM/F&O/CD); BSE: INB/F 011288033 (CM/F&O); NSDL: IN-DP-NSDL-301-2008. CIN-U67120MH2007FTC170004. Registered Office: 502/A, TimesSquare, Andheri Kurla Road, Andheri East, Mumbai 400059, India. Investment in securities market are subject to market risks, read all the related documents carefully before investing. The securities quoted are exemplary and are not recommendatory.*

*Options involve risk and are not suitable for all investors. For information on the uses and risks of options, you can obtain a copy of the Options Clearing Corporation risk disclosure document titled [Characteristics and Risks of Standardized Options](#) by calling (312) 542-6901.*

*Futures are not suitable for all investors. The amount you may lose may be greater than your initial investment. Before trading futures, please read the [CFTC Risk Disclosure](#). For a copy visit [interactivebrokers.com](#).*

*Security futures involve a high degree of risk and are not suitable for all investors. The amount you may lose may be greater than your initial investment. Before trading security futures, please read the [Security Futures Risk Disclosure Statement](#). For a copy visit [Interactivebrokers.com](#).*

*There is a substantial risk of loss in foreign exchange trading. The settlement date of foreign exchange trades can vary due to time zone differences and bank holidays. When trading across foreign exchange markets, this may necessitate borrowing funds to settle foreign exchange trades. The interest rate on borrowed funds must be considered when computing the cost of trades across multiple markets.*

*The Order types available through Interactive Brokers LLC's Trader Workstation are designed to help you limit your loss and/or lock in a profit. Market conditions and other factors may affect execution. In general, orders guarantee a fill or guarantee a price, but not both. In extreme market conditions, an order may either be executed at a different price than anticipated or may not be filled in the marketplace.*

*There is a substantial risk of loss in trading futures and options. Past performance is not indicative of future results.*

*Any stock, options or futures symbols displayed are for illustrative purposes only and are not intended to portray recommendations.*

Interactive Brokers LLC is a member of [NYSE FINRA SIPC](#)

Interactive Brokers LLC is registered with HKSFCA and is a participant of the Sydney Futures Exchange (SFE)

*The information contained herein is of a general nature and is not intended to address the circumstances of any particular individual or entity. There can be no guarantee that information is accurate as of the date it is received or that it will continue to be accurate in the future. No one should act on such information without appropriate professional advice after a thorough examination of the particular situation.*