

Covestor

Investing, simplified.

866-825-3005

covestor

What is Covestor?

Covestor is an online investing marketplace that lets you mirror the trades of professional Portfolio Managers.

An alternative to mutual funds and ETFs.



Covestor benefits

We are a SEC-registered investment adviser and part of the Interactive Brokers family.

Clients keep control of their money in their own separately-managed brokerage account held at IB.

This enables clients to control how they allocate their money at all times.



Covestor benefits

Covestor utilizes a risk scoring system that allows clients to select portfolios that match their risk tolerance.

Covestor provides tools and information about Portfolio Managers to assist clients in making good investment decisions.

How Covestor Works

It's as easy as 1-2-3:

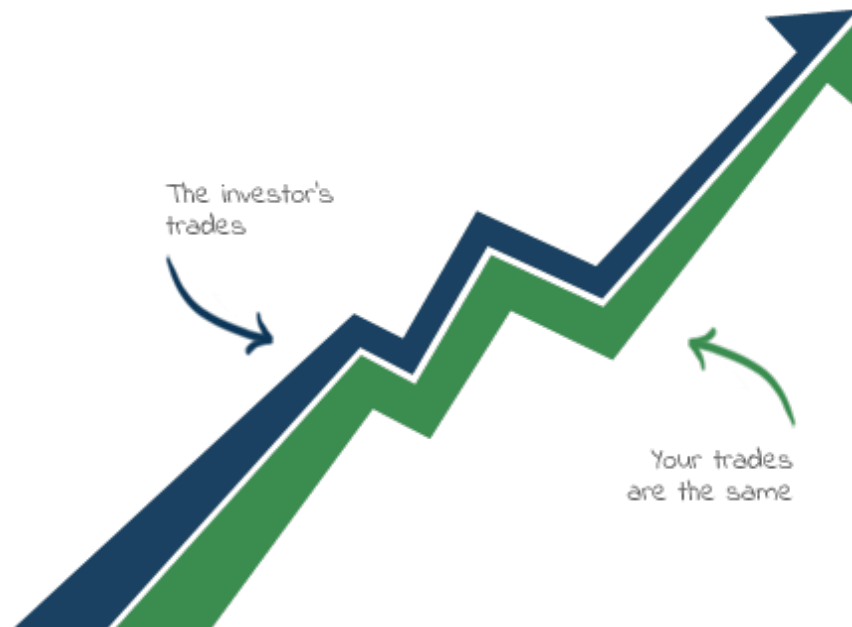
- 1) Open a Covestor account.
- 2) Fund a brokerage account with Interactive Brokers.
- 3) Select portfolios and start “Covesting.”



How Covestor works

Covestor makes the same trades for Portfolio Managers and clients simultaneously and automatically.

Everyone gets the same price.



How Covestor selects managers

Our Investment Management Team - which includes a PhD, CFA / Chartered Alternative Investment Analyst, and Quantitative Analyst - vets and continuously monitors Portfolio Managers for the Covestor marketplace.

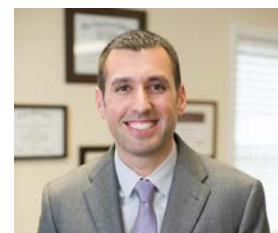
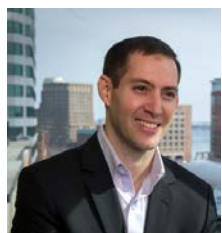


How Covestor selects managers

All Covestor Portfolio Managers are currently registered investment advisers in the US.

Each manager is required to have “skin in the game” - their own money invested in the portfolio they manage.

Portfolio Managers must meet our investment criteria and have the required amount of assets under management.



Covestor portfolios

Covestor offers dozens of portfolios that can invest in:

US securities

ADRs

Closed-end funds

Preferred shares

ETFs

Options

Covestor portfolios

You can find a Portfolio Manager whose style matches yours:

International

Large cap

Market timing

Sector focus

Leverage

Filter results reset all

Risk score ? reset

1 2 3 4 5

Click or drag to select

Account type reset

Available to IRA accounts 32

Available to cash accounts 12

Fees reset

0.1% to 0.5% 7

0.6% to 1% 16

1.1% to 1.5% 22

1.6% + 0

Asset class reset

Multi asset class 9

Equity 33

Fixed income 2

Speciality asset class 2

Strategy reset

Aggressive 5

ETF asset allocation 3

ETF rotation 8

Options 3

Stock selection 22

Yield 5

Specialist focus reset

International 1

Large cap 6

Leverage 3

Market timing 2

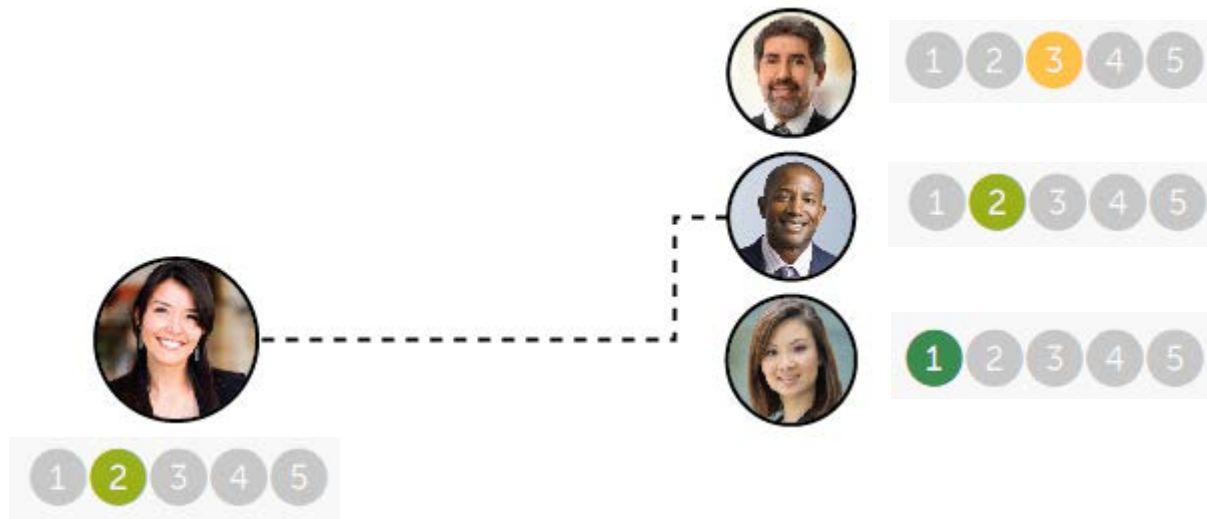
Sector focus 4

Short 3

Small cap 5

Risk score

There is a **risk score** associated with every portfolio, so you'll know at a glance if it's right for you.



Fees and minimum investments

Low fees, low minimums and low trading costs.

Management fees 1.5% or less.

No charge for uninvested cash.

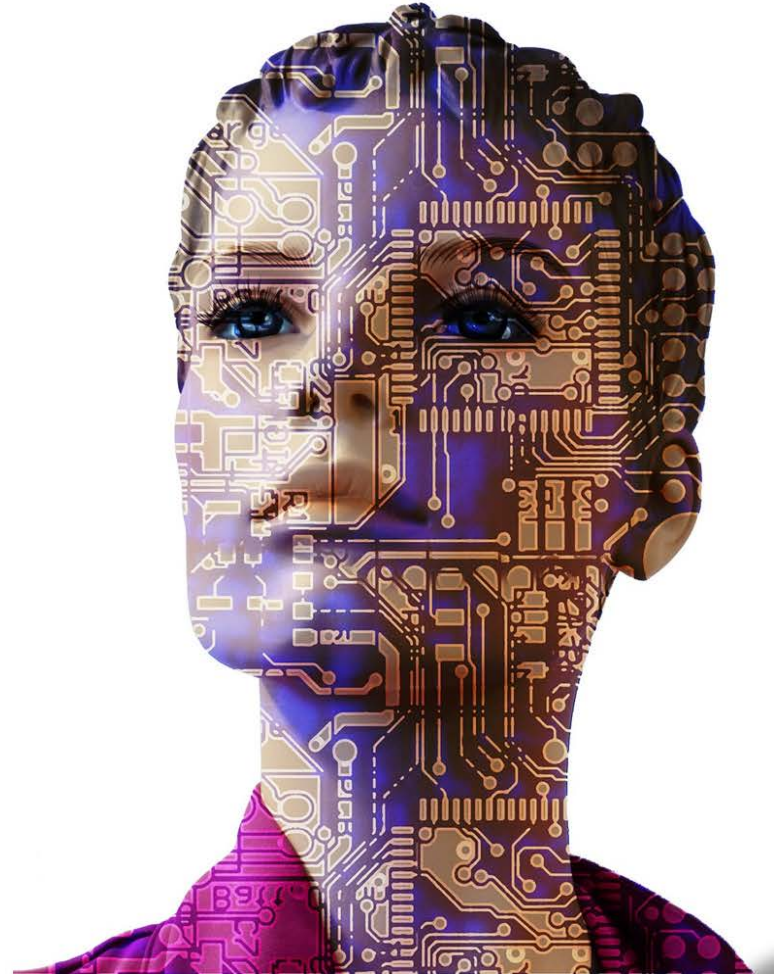
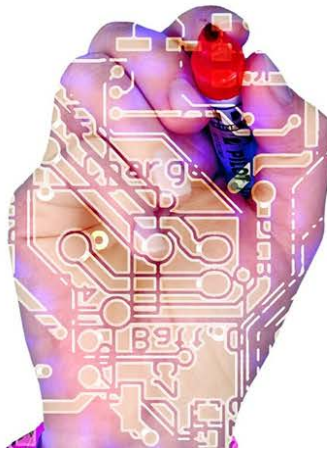
Minimum investment starts at \$10,000.

Trades generally cost about \$1 per trade.



Covestor: Robo - not Robot

Covestor is a
pioneer in online investing,
but differs from other
robo-advisers in
3 key ways.



Covestor: Robo - not Robot

#1

Real people, not robots

Portfolios are
actively managed by
professional money
managers.



Covestor: Robo - not Robot

#2

Skin in the game

Portfolio Managers
**must have their own
money invested**
in the portfolios they
manage so their interests
are aligned with our
clients' interests.



Covestor: Robo - not Robot

#3

**Online convenience,
human help**

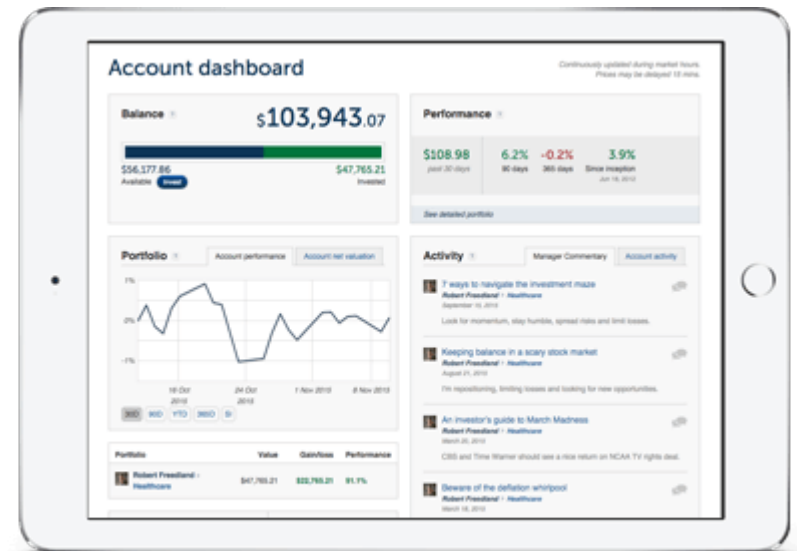
Covestor serves **self-directed investors**, but also **offers human help** from licensed professionals based in our Boston office.



Why Covestor - transparency

See what Portfolio Managers are buying and selling, your current holdings and performance - net of fees - online, anytime.

No need to wait for quarterly reports.



How to find a manager

covestor

How it works

Investment portfolios

Your account

Find your investment match

Browse all investment portfolios

Covestor champions

Call us to discuss your needs:

1.866.825.3005

9am to 5pm ET Monday to Friday

Filter results

reset all

Risk score

reset



Click or drag to select

Account type

reset

- Available to IRA accounts 32
- Available to cash accounts 12

Fees

reset

- 0.1% to 0.5% 7
- 0.6% to 1% 16
- 1.1% to 1.5% 22

46 search results

1 2 3 4 5 Next

Sort by: Sharpe ratio Manager performance Risk score Order by: Highest Lowest



Closed End Fund Advisors • Municipal CEF Bond Opportunity

See full details

Strategy

Sharpe ratio

Performance

Risk score

Fees

Yield

2.99
365 days

21.4%
365 days



0.5% fee
\$10,000 minimum



Sera Capital Management • Financial Tales Portfolio

See full details

Strategy

Sharpe ratio

Performance

Risk score

Fees

ETF asset allocation

1.37
365 days

9.4%
365 days



1% fee
\$10,000 minimum



Successful Portfolios LLC • Low Beta

See full details

Transparency - portfolio description

covestor

How it works

Investment portfolios

🔒 Your account



Closed End Fund Advisors

Closed End Fund Advisors

Investment Adviser

Founded

1989

Municipal CEF Bond Opportunity

Asset class

Fixed income

Strategy

Yield

Summary

Approach

Research

Allocation discipline

Sell discipline

Exceptions

We look to blend three primary factors:

1. Evaluation of the funds market price to net asset value (NAV) in the context of historical levels and current peer levels. We also try to answer the question. "Why is it different now?" are investors mad at the fund or some other short-term condition, or did the rules change in which we should evaluate the manager or sector?
2. How has the manager performed after cost or expenses? (NAV total return performance). How has he done vs. peer fund and similar indexes?
3. The third part of our analysis is looking at the funds sectors, CEF data and peer funds to see if they are delivering a distribution level that is more likely to be maintained or increased vs reduced.

We try to blend the asset allocation and manager research with the ability to seek CEF alpha, which is experiencing the narrowing of a CEF discount to NAV. Discounts can also help protect investors from expected market or fund news items. Discounts at a certain level draw in institutional and activist investors which can help support the stock price in many cases.

Transparency - performance

Performance

-0.9%

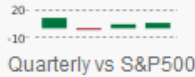
Month to date

-0.9%

Quarter to date

12.2%

Year to date



Risk score [?]



7.6%

Best quarter

-4.1%

Worst quarter

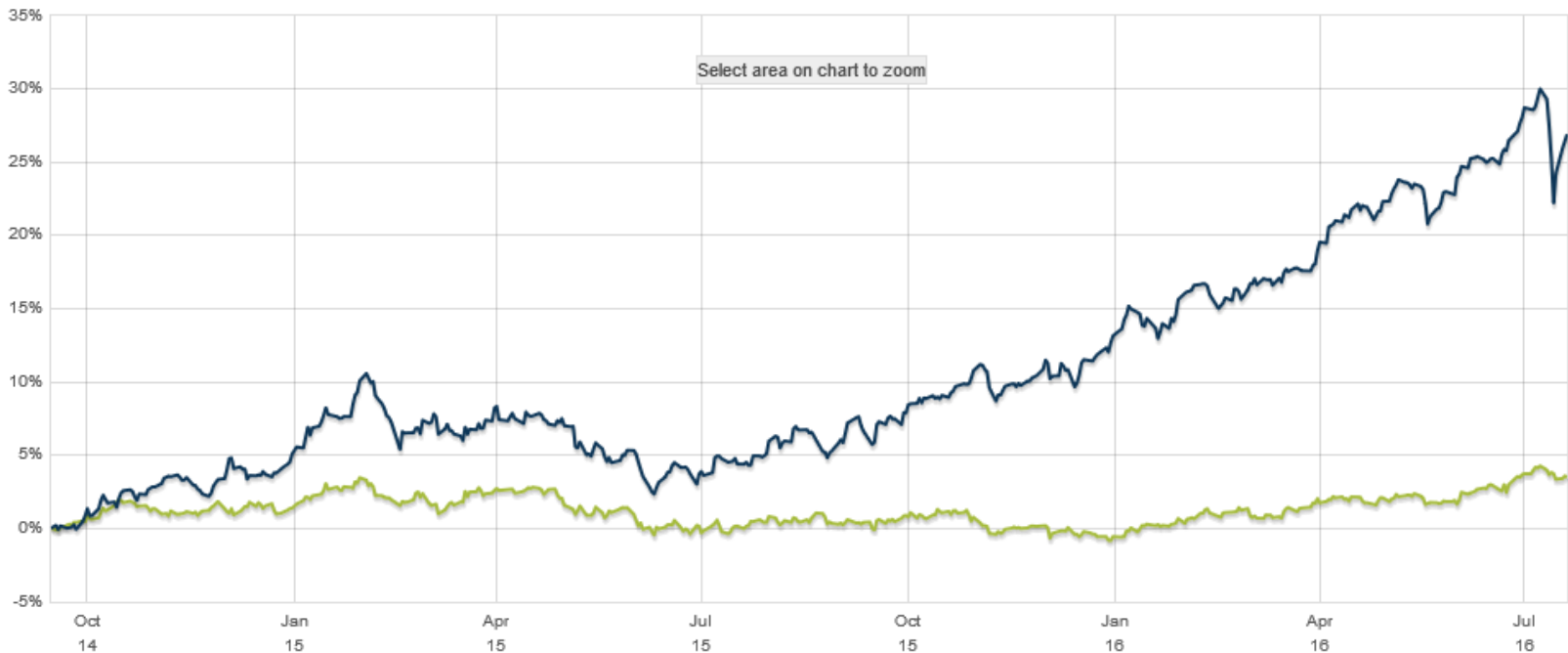
Invest

*\$10,000 investment min
0.5% fee*

Required: Margin account

Performance detail

■ Manager (net of fees [?]) ■ U.S. Aggregate Bond ETF ■ S&P 500 Average Investor ([View Latest](#) [?])



30D 90D 365D SI

Transparency - risk metrics

Performance

Portfolio inception September 15, 2014



as of July 20, 2016	Manager (net of fees ?)	U.S. Aggregate Bond ETF
Month-to-date	-0.9%	-0.2%
Quarter-to-date	-0.9%	-0.2%
Last 365 Days	21.4%	3.3%
Since inception (Annualized)	13.8%	1.9%
2016 (YTD)	12.2%	4.1%
2015	7.7%	-1.9%

Closed End Fund Advisors 's other strategies



You might also like...

- [Yield Annual by Closed End Fund Advisors](#)
- [Growth Plus Income by BSG&L Financial Services](#)
- [Dividend Growth by Sizemore Capital](#)
- [Dividend and Income Plus by 401 Advisor](#)
- [Long Term GARP by Y H & C Investments](#)

Risk metrics

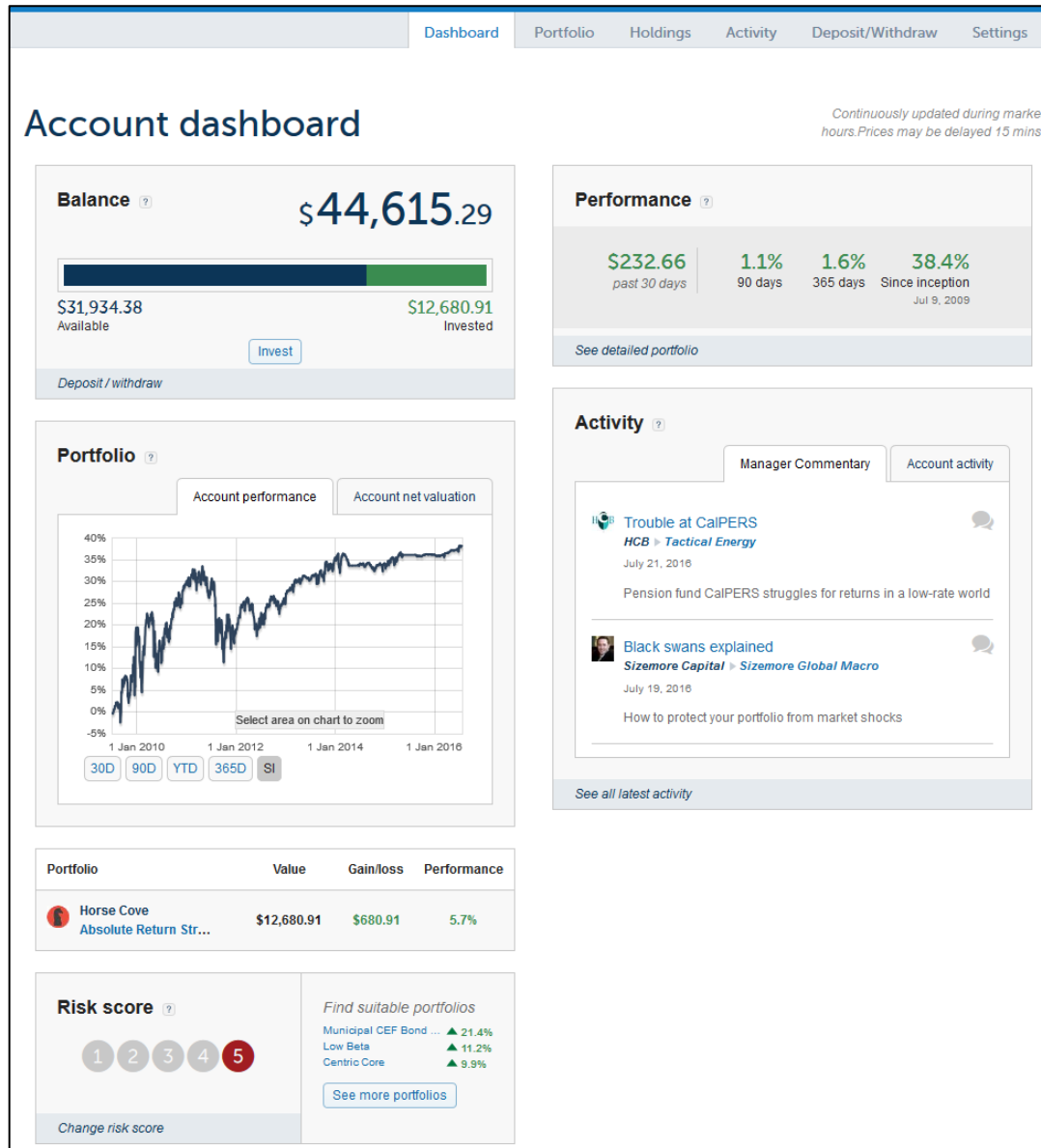
Last 365 days



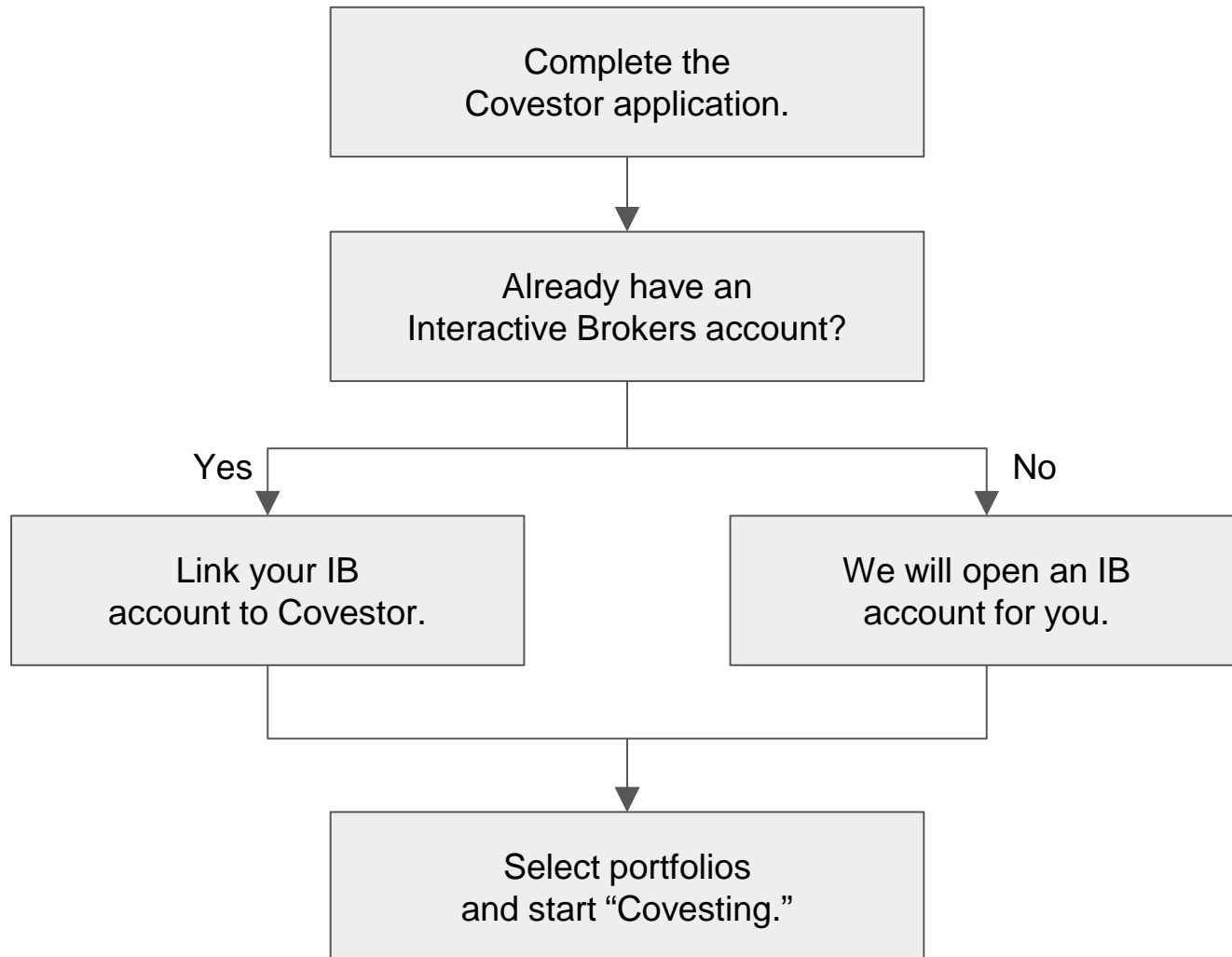
as of July 20, 2016	Manager (net of fees ?)	U.S. Aggregate Bond ETF
Volatility ?	7.1%	3.2%
Sharpe Ratio ?	2.99	0.93
Sortino Ratio ?	3.43	1.39
Maximum Drawdown ?	-6.0%	-2.1%
Value-at-risk (95%, 1 week) ?	-1.6%	-0.7%

	vs. U.S. Aggregate Bond ETF	vs. S&P 500
Information Ratio ?	2.66	1.01
Alpha ?	17.4%	19.7%
Beta ?	0.67	-0.01
R-Squared ?	0.09	0.00

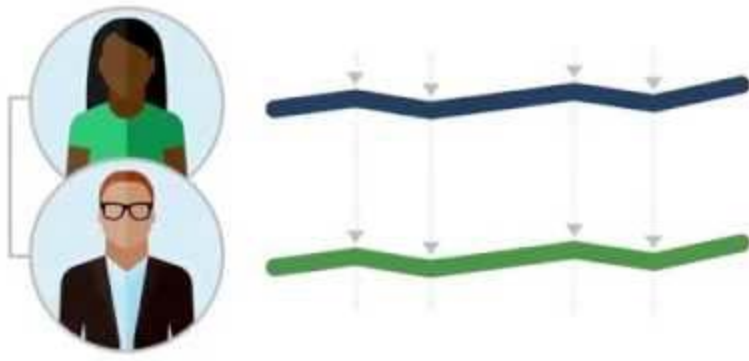
Your dashboard



We invest, you invest with us



Covestor: Investing, simplified.



Covestor

Q&A

covestor

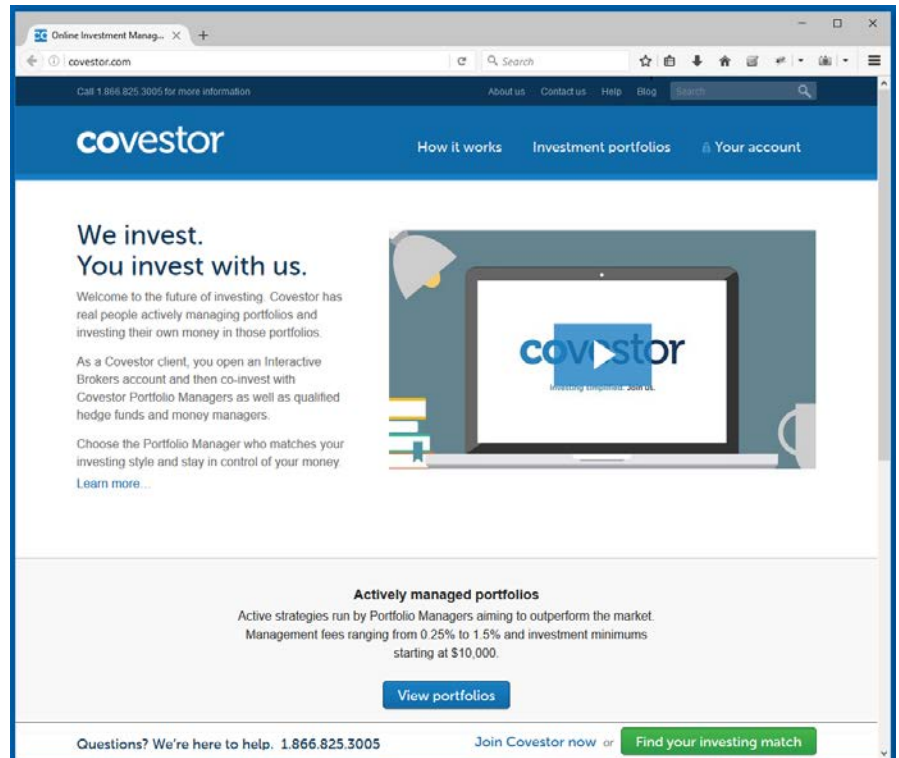
Learn more

Visit us at [Covestor.com](https://covestor.com)

Call us at 866-835-3005

Do a free, no obligation trial

Subscribe to our Smarter
Investing blog free



Covestor

Covest with us

866-825-3005

covestor