

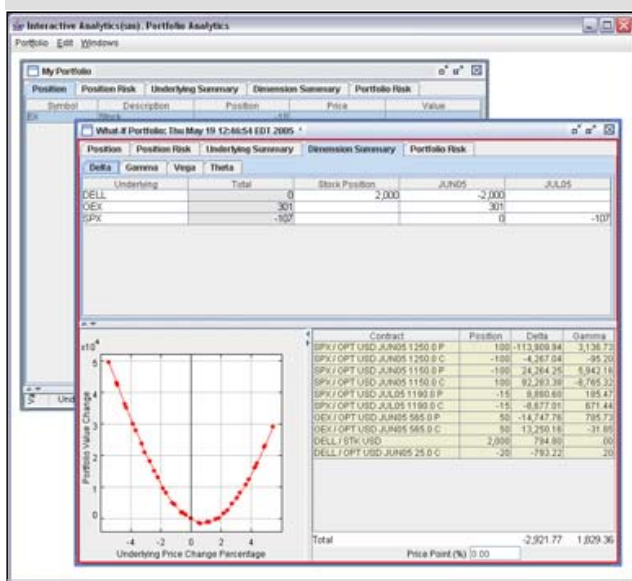
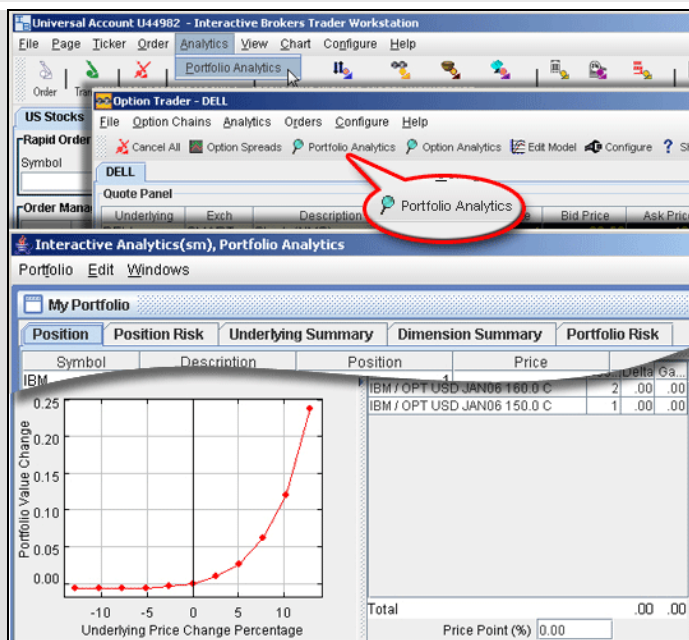
Interactive Analytics QuickStart Reference

1. Open Portfolio Analytics

Portfolio Analytics helps you assess the risk of your entire portfolio across asset classes, and look at the risk of "what-if" scenarios. You can access Portfolio Analytics from the main trading screen or from the Option Trader window.

- From the trading screen, use the **Analytics** menu and select *Portfolio Analytics*.
- On the Option Trader window, click the **Portfolio Analytics** icon.

Portfolio Analytics is a split screen with six tabbed pages of risk assessment data on the top half, and related portfolio and sub-portfolio value plots on the bottom half.



3. Create "What-if" Scenarios

Create and view the risk implications of one or multiple "what-if" scenarios. You can use the "what-if" feature to determine if trades you are considering will leave your risk profile comfortably within your risk bounds. To create a "what-if," on the **Portfolio** menu select *New*, then drag contracts from your trading screen into the Position window. Assign positions to each contract.

To base a "what-if" scenario on your current portfolio, on the **Edit** menu select *Add From* and select *My Portfolio*. All current positions are imported into a "what-if" where they can be edited.

2. View Risk Assessment

The risk assessment pages that comprise Portfolio Analytics include:

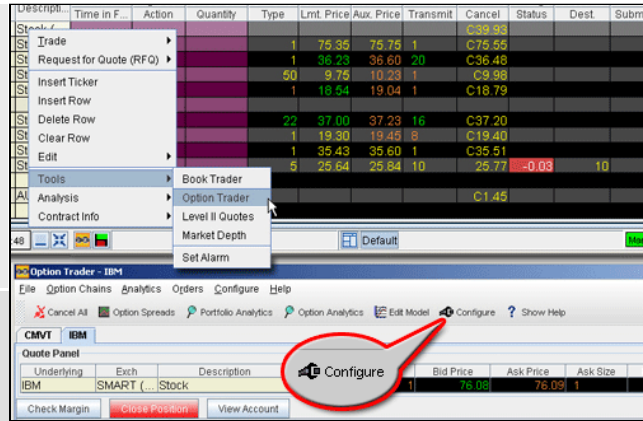
- **Position** – Shows all of your positions and their values sorted alphabetically by underlying.
- **Position Risk** – Shows the risk position for each underlying.
- **Underlying Summary** – Shows the total risk by expiry and risk dimension (Greek value) for each underlying.
- **Dimension Summary** – Shows the total risk by underlying and expiry for each risk dimension (Greek value).
- **Portfolio Risk** – Shows the equivalent portfolio risk for all positions, and a summary of all stock and options values in your portfolio.
- **VAR Summary** – shows the greatest loss a portfolio will sustain in a day with 99% confidence.

You can also view the daily Principle Component Analysis VAR calculation under Account Management.

Option Analytics lets you risk-assess individual option classes. The Option Modeler calculates option model prices based on live market data, including the volatility smile, and displays its results on both the Option Trader and main trading screens. Both Option Analytics and Option Modeler are accessed from the Option Trader.

1. Open the Option Trader

Highlight a stock underlying, and use the right-click menu to select *Tools*, and then select *Option Trader*. Option Trader lets you monitor the change in price of the underlying asset, create and manage option orders and view the option model prices, implied volatilities and risk dimensions.

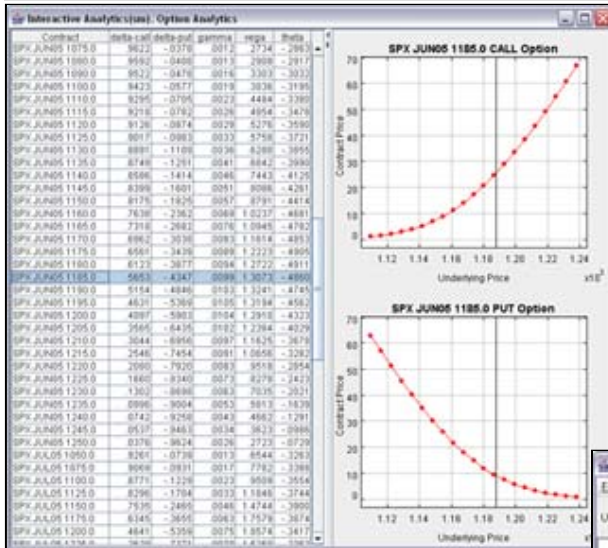


2. Configure the Option Trader

If you don't see column headings for Model, Imp. Vol. and the four Greek values (Delta, Gamma, Vega and Theta) display these fields by clicking the **Configure** icon. Select *Option Chains* in the left pane, and check the desired column headings in the right pane.

3. View Option Analytics

The Option Analytics window displays values that reflect the rate of change of an option's price with respect to a unit change in each of a number of risk dimensions. The price plots display the static set of contract prices determined by a pricing model, which is updated daily.



4. Use the Option Modeler

The option model prices and implied volatilities are automatically calculated when you open the Option Trader. You can modify the pricing assumptions and recalculate model prices using the Option Modeler. You can edit the model's volatility curve by adding and removing "volatility knots." Modify the Dividend Schedule and Interest Rates by clicking the Manual radio button beneath each table and entering your own values. To recalculate using your pricing assumptions, click *Refresh Plot*. View the model prices and implied volatilities on the Option Trader and main trading screens.

