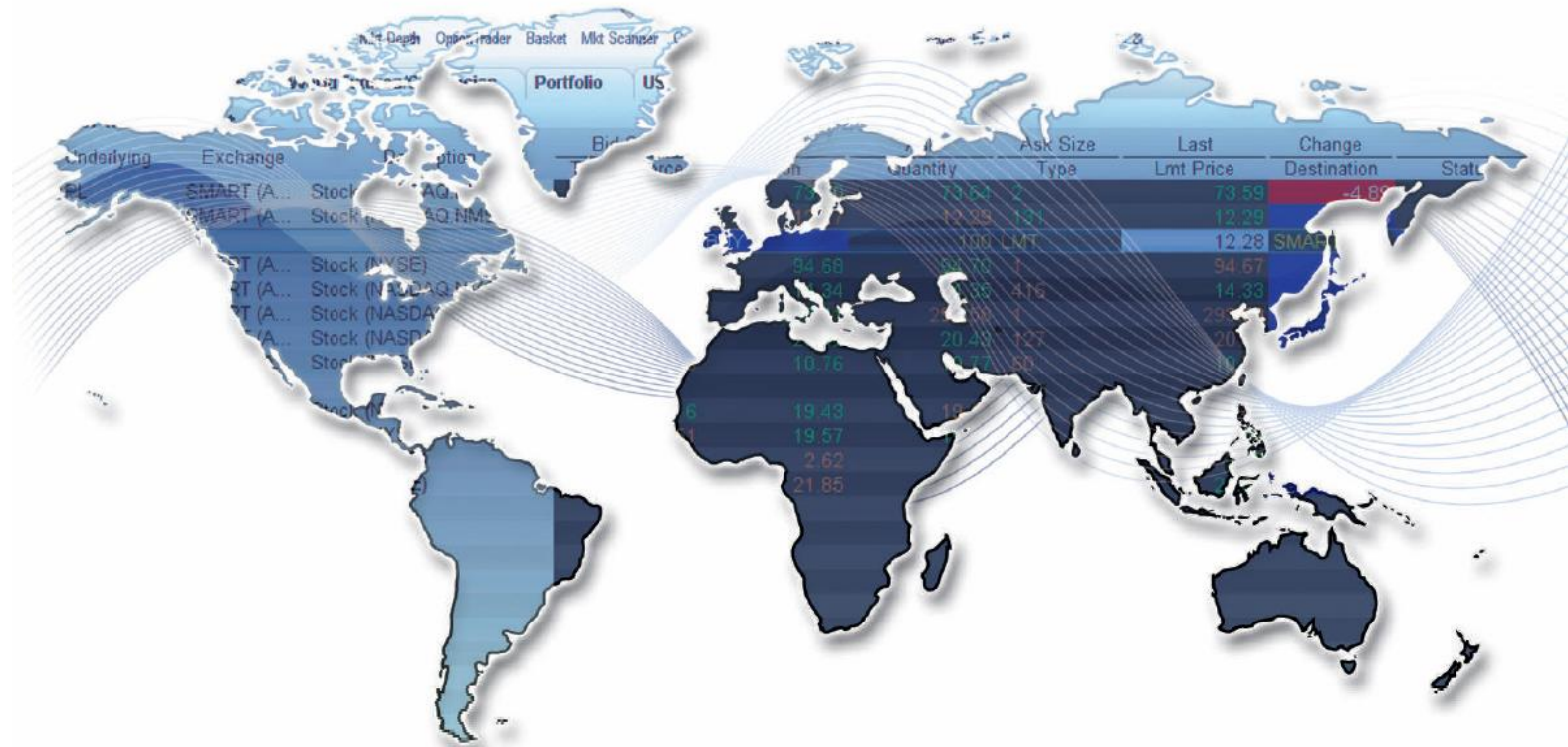


Trading Around the World

Trading Related Markets - Equities & Gold



Exchange and Industry Sponsored Webinars are presented by unaffiliated third parties. Interactive Brokers LLC is not responsible for the content of these presentations. You should review the contents of each presentation and make your own judgment as to whether the content is appropriate for you. Interactive Brokers LLC does not provide recommendations or advice..



Welcome to Interactive Brokers

Interactive Brokers Group* has completed its 31st year in developing trading technology. Our mission remains unchanged:

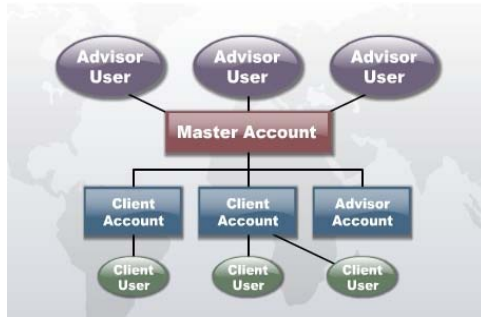
"Create technology to provide liquidity on better terms. Compete on price, speed, size, diversity of global products and advanced trading tools."

Interactive Brokers' headquarters are in Greenwich Connecticut, and it has offices in Chicago, Switzerland, Canada, Hong Kong, London, Sydney among others.

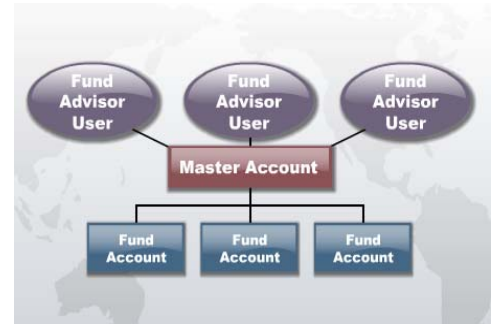
IB is regulated by the SEC, FINRA, NYSE, FSA and other regulatory agencies around the world.

*and its predecessor companies

PROFESIONAL ADVISOR

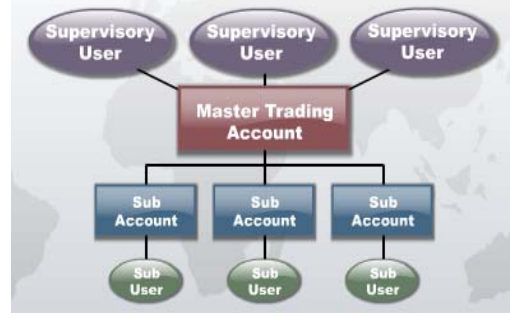


HEDGE / MUTUAL FUND



TRADING GROUPS

SEPARATE TRADING LIMIT ACCOUNTS



NON - DISCLOSED BROKER





Interactive Brokers Facts & Figures

- ❑ Interactive Brokers has been building direct access trading technology for 33 years to deliver real advantages to trading professionals.
- ❑ Interactive Brokers Group currently holds \$4.8 billion in equity capital
- ❑ Interactive Brokers has automated every aspect of the trade process in-house, enabling us to offer lower commissions, lower margin interest rates and higher interest paid.
- ❑ Trader Workstation provides electronic access on more than 80 market centers worldwide to stocks, options, futures, forex, bonds and more from a single, IB Universal Account.
- ❑ With the exception of foreign exchange, we trade only exchange listed products that are cleared through central clearing houses and are marked daily to external closing prices disseminated by the exchanges
- ❑ Interactive Brokers' customers are protected by \$30 million securities account protection

Global Market Access

Stocks, Futures Options, FX, Bonds, ETF's and Warrants trading from **one single Universal Account.**



American Stock Exchange (AMEX)
Boston Options Exchange (BOX)
Chicago Board Options Exchange (CBOE)
Chicago Board of Trade (CBOT)
Chicago Mercantile Exchange (CME)
CBOE Futures Exchange (CFE)
International Securities Exchange (ISE)
National Association of Securities Dealers (NASDAQ)
New York Stock Exchange (NYSE)
NYSE Arca, BTRADE, INET (ISLAND), DirectEdge
OneChicago (ONE)
Pacific Exchange (PCX)
Philadelphia Stock Exchange (PHLX)
New York Mercantile Exchange (NYMEX)
National Stock Exchange (NSX)
Montreal Exchange (ME)
Toronto Stock Exchange (TSX)
Toronto Venture Exchange (TSXV)

New:

Mexican Stocks and derivatives
Spanish Stocks
US Treasury Securities and Mutual Funds



Eurex Deutschland (formerly DTB)
Eurex Schweiz (formerly SOFFEX)
XETRA (formerly IBIS)
EDX London Limited (formerly OMLX, Sweden)
Euronext Amsterdam
Euronext Brussels
Euronext Liffe
Euronext Paris
Euronext LIFFE, London
Intercontinental Exchange, ICE (formerly IPE)
London Stock Exchange (LSE)
Stockholm Fondborgs (SFB)
Swiss Exchange (SWX, VirtX)
Spanish Futures & Options Exchange (MEFF)
Italiana Borsa (IDEM division)



Hong Kong Futures Exchanges (HKFE)
Stock Exchange of Hong Kong (SEHK) (SEOCH)
Australian Stock Exchange (ASX)
Sydney Futures Exchange (SFE)
Singapore Exchange (SGX)
Tokyo Stock Exchange (TSE.JPN)
Korea Stock Exchange (KSE)
Osaka Securities Exchange (OSE.JPN)



IB Key Highlights

- Low Costs
- Risk Control (real-time margin system)
- IB Universal AccountSM
- IB SmartRoutingSM
- Flexible & Customizable Trading System
- IB Risk Navigator (market risk)
- White Labeling

IB's Trader Workstation (TWS)

The Professional's Gateway to the World's Markets

OptionTrader - DBK

File Option Chains Analytics Orders Configure Help

EUR DBK

Quote Panel

Underlying	Exch	Description	Position	Bid Size	Bid Price	Model	Ask Price	Ask Size	Last Price	Imp. Vol. (%)	Chg
DBK	IBIS	Stock (XE...)		2,040	82.570		82.660	600	82.600		
DBK	SBF	Stock (DBK)		2,000	82.55		82.70	2,000	82.60		

Check Margin Close Position View Account

Orders Log Execution Portfolio

Underlying	Descript	Time in Force	Action	Quantity	Type	Lmt. Price	Aux. Price	Cancel	Status	Order V.	Stock Ra	Stock R	Delta	Auc. Str
	DAY		BUY	0	Default									

Option Chains - DBK

Bid Price	Model	Ask Price	Call	Last Price	Change	Imp. Vol.	Delta	Description	Bid Price	Model	Ask Price	Put	Last Price	Change	Imp. Vol.	Delta	Gamm
8.48	82.62	8.88	C83.42			1.0000	JUL06 0.01...		0.00		C0.01				0.0000	0.000	
6.54	6.77	6.93	C9.54			3.185%	JUL06 74.0...		0.07		C0.04				3.155%	-0.0361	0.014
4.76	4.88	4.96	C5.65			2.928%	JUL06 78.0...		0.06		0.13	0.14	0.10	+0.02	2.984%	-0.0637	0.023
3.01	3.09	3.18	C3.24			-2.430%	JUL06 80.0...		0.18	0.23	0.24	0.18	0.18	+0.01	2.674%	-0.1162	0.047
1.53	1.53	1.53	C1.53			-0.302%	JUL06 82.0...		0.42	0.24	0.48	0.38	0.38	+0.02	2.419%	-0.2179	0.082
0.83	0.75	0.70	0.83			-0.482%	JUL06 84.0...		0.97	1.05	1.01	1.00	1.00	+0.20	2.175%	-0.4157	0.114
0.18	0.27	0.24	0.31			-10.102%	JUL06 86.0...		1.97	2.11	2.05	1.87	1.87	+0.25	2.032%	-0.8514	0.112
0.08	0.10	0.14	0.20			-2.052%	JUL06 88.0...		3.48	3.63	3.63	3.25	3.25	+0.30	1.980%	-0.8408	0.072
0.07	0.07	0.10	0.20			-2.052%	JUL06 89.0...		4.35	4.54	4.55	C3.78			1.914%	-0.5041	0.052
0.01	0.07	0.11	C0.07			-0.082%	JUL06 90.0...		5.26	5.46	5.57	5.25	5.25	+0.58	1.882%	-0.3349	0.001
0.06	0.05	0.10	0.07			+0.032%	JUL06 90.0...		5.24	6.44	6.54	6.40	6.40	+0.78	0.573%	-0.9535	0.027
0.04	0.04	C0.02					JUL06 91.0...		7.20	7.42	7.58	C6.58			0.619%	-0.9681	0.015
0.03	0.03	C0.01					JUL06 92.0...		8.20	8.41	8.58	C7.57			0.689%	-0.9746	0.014
							JUL06 92.0...		9.19	9.40	9.59	9.40	9.40	+0.83	0.728%	-0.9806	0.014

Universal Account US7013 - Interactive Brokers Trader Workstation

Conveniences US options Stocks worldwide FX S&P Global options Top Options Imp Vol % Gainers Pending (day)

Underlying	Exch	Description	Stock	Change	%	High % Volume	Change	%	High % Volume	Time	Delta
MMSI	SMART	(ISUPER)S&P500	12.99	-1.31%		2.51%	-41.19%		0.001	00:01	
CFR	SMART	(INYS)ISLAND	8.84	-0.23%		0.80%	-35.29%		0.006	00:00	
CEL	SMART	(INYS)ISLAND	10.92	-0.54%		0.80%	-32.17%		0.009	00:00	
CNVR	SMART	(ISUPER)S&P500	8.88	0.27%		0.80%	-29.56%		0.009	00:00	
COE	SMART	(INYS)ISLAND	22.14	0.50%		0.80%	-28.01%		0.011	00:01	
ACLS	SMART	(ISUPER)S&P500	5.78	-2.28%		0.80%	-27.92%		0.004	00:00	
VCOS	SMART	(INYS)ISLAND	12.03	-0.33%		0.80%	-27.64%		0.009	00:00	
NFT	SMART	(INYS)ISLAND	6.59	0.00%		0.80%	-26.98%		0.009	00:00	
FBO	SMART	(INYS)ISLAND	18.20	-0.45%		0.80%	-26.92%		0.001	00:00	
GNP	SMART	(INYS)ISLAND	20.33	0.07%		0.80%	-26.88%		0.001	00:00	
TRSA	SMART	(INYS)ISLAND	6.22	-2.41%		0.80%	-26.72%		0.001	00:00	
NOQD	SMART	(ISUPER)S&P500	20.52	-0.40%		0.80%	-26.59%		0.001	00:00	
ACR	SMART	(INYS)ISLAND	5.19	-0.77%		0.80%	-26.55%		0.001	00:01	
ALD	SMART	(INYS)ISLAND	20.09	0.40%		0.80%	-26.39%		0.001	00:00	
BEI	SMART	(INYS)ISLAND	12.78	0.00%		0.80%	-26.35%		0.011	00:01	
COV	SMART	(ISUPER)S&P500	8.15	0.85%		0.80%	-26.29%		0.001	00:00	
DIR	SMART	(INYS)ISLAND	5.17	0.19%		0.80%	-26.19%		0.001	00:00	
LEB	SMART	(INYS)ISLAND	15.14	-0.39%		0.80%	-26.17%		0.001	00:00	
CNO	SMART	(INYS)ISLAND	2.82	0.31%		0.80%	-26.15%		0.001	00:00	
HCQ	SMART	(INYS)ISLAND	28.83	-0.45%		0.80%	-26.13%		0.001	00:00	
INTO	SMART	(INYS)ISLAND	4.81	-2.30%		0.80%	-26.11%		0.001	00:00	
BSOP	SMART	(ISUPER)S&P500	18.51	-0.28%		0.80%	-26.09%		0.001	00:00	
CLB	SMART	(INYS)ISLAND	21.54	0.20%		0.80%	-26.07%		0.001	00:00	
NAT	SMART	(INYS)ISLAND	35.55	0.28%		0.80%	-26.05%		0.001	00:00	
SNBS	SMART	(INYS)ISLAND	4.79	-0.20%		0.80%	-26.03%		0.001	00:00	
ADPT	SMART	(ISUPER)S&P500	4.24	-1.41%		0.80%	-26.01%		0.001	00:00	
GTOP	SMART	(INYS)ISLAND	6.38	-0.79%		0.80%	-25.99%		0.001	00:00	
LT	SMART	(INYS)ISLAND	15.84	-0.23%		0.80%	-25.97%		0.001	00:00	
HIIT	SMART	(ISUPER)S&P500	4.16	-1.20%		0.80%	-25.95%		0.001	00:00	
CAMR	SMART	(INYS)ISLAND	10.97	-0.59%		0.80%	-25.93%		0.001	00:00	
FNRS	SMART	(INYS)ISLAND	3.29	-0.30%		0.80%	-25.91%		0.001	00:00	
FRNT	SMART	(INYS)ISLAND	18.27	-0.30%		0.80%	-25.89%		0.001	00:00	
LEB	SMART	(INYS)ISLAND	16.83	-0.23%		0.80%	-25.87%		0.001	00:00	
SE	SMART	(INYS)ISLAND	47.68	-0.12%		0.80%	-25.85%		0.001	00:00	
LEB	SMART	(INYS)ISLAND	16.73	-0.12%		0.80%	-25.83%		0.001	00:00	
LEB	SMART	(INYS)ISLAND	47.68	-0.12%		0.80%	-25.81%		0.001	00:00	
LEB	SMART	(INYS)ISLAND	16.73	-0.12%		0.80%	-25.79%		0.001	00:00	
LEB	SMART	(INYS)ISLAND	47.68	-0.12%		0.80%	-25.77%		0.001	00:00	
LEB	SMART	(INYS)ISLAND	16.73	-0.12%		0.80%	-25.75%		0.001	00:00	
LEB	SMART	(INYS)ISLAND	47.68	-0.12%		0.80%	-25.73%		0.001	00:00	
LEB	SMART	(INYS)ISLAND	16.73	-0.12%		0.80%	-25.71%		0.001	00:00	
LEB	SMART	(INYS)ISLAND	47.68	-0.12%		0.80%	-25.69%		0.001	00:00	
LEB	SMART	(INYS)ISLAND	16.73	-0.12%		0.80%	-25.67%		0.001	00:00	
LEB	SMART	(INYS)ISLAND	47.68	-0.12%		0.80%	-25.65%		0.001	00:00	
LEB	SMART	(INYS)ISLAND	16.73	-0.12%		0.80%	-25.63%		0.001	00:00	
LEB	SMART	(INYS)ISLAND	47.68	-0.12%		0.80%	-25.61%		0.001	00:00	
LEB	SMART	(INYS)ISLAND	16.73	-0.12%		0.80%	-25.59%		0.001	00:00	
LEB	SMART	(INYS)ISLAND	47.68	-0.12%		0.80%	-25.57%		0.001	00:00	
LEB	SMART	(INYS)ISLAND	16.73	-0.12%		0.80%	-25.55%		0.001	00:00	
LEB	SMART	(INYS)ISLAND	47.68	-0.12%		0.80%	-25.53%		0.001	00:00	
LEB	SMART	(INYS)ISLAND	16.73	-0.12%		0.80%	-25.51%		0.001	00:00	
LEB	SMART	(INYS)ISLAND	47.68	-0.12%		0.80%	-25.49%		0.001	00:00	
LEB	SMART	(INYS)ISLAND	16.73	-0.12%		0.80%	-25.47%		0.001	00:00	
LEB	SMART	(INYS)ISLAND	47.68	-0.12%		0.80%	-25.45%		0.001	00:00	
LEB	SMART	(INYS)ISLAND	16.73	-0.12%		0.80%	-25.43%		0.001	00:00	
LEB	SMART	(INYS)ISLAND	47.68	-0.12%		0.80%	-25.41%		0.001	00:00	
LEB	SMART	(INYS)ISLAND	16.73	-0.12%		0.80%	-25.39%		0.001	00:00	
LEB	SMART	(INYS)ISLAND	47.68	-0.12%		0.80%	-25.37%		0.001	00:00	
LEB	SMART	(INYS)ISLAND	16.73	-0.12%		0.80%	-25.35%		0.001	00:00	
LEB	SMART	(INYS)ISLAND	47.68	-0.12%		0.80%	-25.33%		0.001	00:00	
LEB	SMART	(INYS)ISLAND	16.73	-0.12%		0.80%	-25.31%		0.001	00:00	
LEB	SMART	(INYS)ISLAND	47.68	-0.12%		0.80%	-25.29%		0.001	00:00	
LEB	SMART	(INYS)ISLAND	16.73	-0.12%		0.80%	-25.27%		0.001	00:00	
LEB	SMART	(INYS)ISLAND	47.68	-0.12%		0.80%	-25.25%		0.001	00:00	
LEB	SMART	(INYS)ISLAND	16.73	-0.12%		0.80%	-25.23%		0.001	00:00	
LEB	SMART	(INYS)ISLAND	47.68	-0.12%		0.80%	-25.21%		0.001	00:00	
LEB	SMART	(INYS)ISLAND	16.73	-0.12%		0.80%	-25.19%		0.001	00:00	
LEB	SMART	(INYS)ISLAND	47.68	-0.12%		0.80%	-25.17%		0.001	00:00	
LEB	SMART	(INYS)ISLAND	16.73	-0.12%		0.80%	-25.15%		0.001	00:00	
LEB	SMART	(INYS)ISLAND	47.68	-0.12%		0.80%	-25.13%		0.001	00:00	
LEB	SMART	(INYS)ISLAND	16.73	-0.12%		0.80%	-25.11%		0.001	00:00	
LEB	SMART	(INYS)ISLAND	47.68	-0.12%		0.80%	-25.09%		0.001	00:00	
LEB	SMART	(INYS)ISLAND	16.73	-0.12%		0.80%	-25.07%		0.001	00:00	
LEB	SMART	(INYS)ISLAND	47.68	-0.12%		0.80%	-25.05%		0.001	00:00	
LEB	SMART	(INYS)ISLAND	16.73	-0.12%		0.80%	-25.03%		0.001	00:00	
LEB	SMART	(INYS)ISLAND	47.68	-0.12%		0.80%	-25.01%		0.001	00:00	
LEB	SMART	(INYS)ISLAND	16.73	-0.12%		0.80%	-24.99%		0.001	00:00	
LEB	SMART	(INYS)ISLAND	47.68	-0.12%		0.80%	-24.97%		0.001	00:00	
LEB	SMART	(INYS)ISLAND	16.73	-0.12%							

Trading Related Markets – Equities & Gold

Anthony Drager,
Founder/President of AntTrading, Inc. and Frank Futures Daily Newsletter

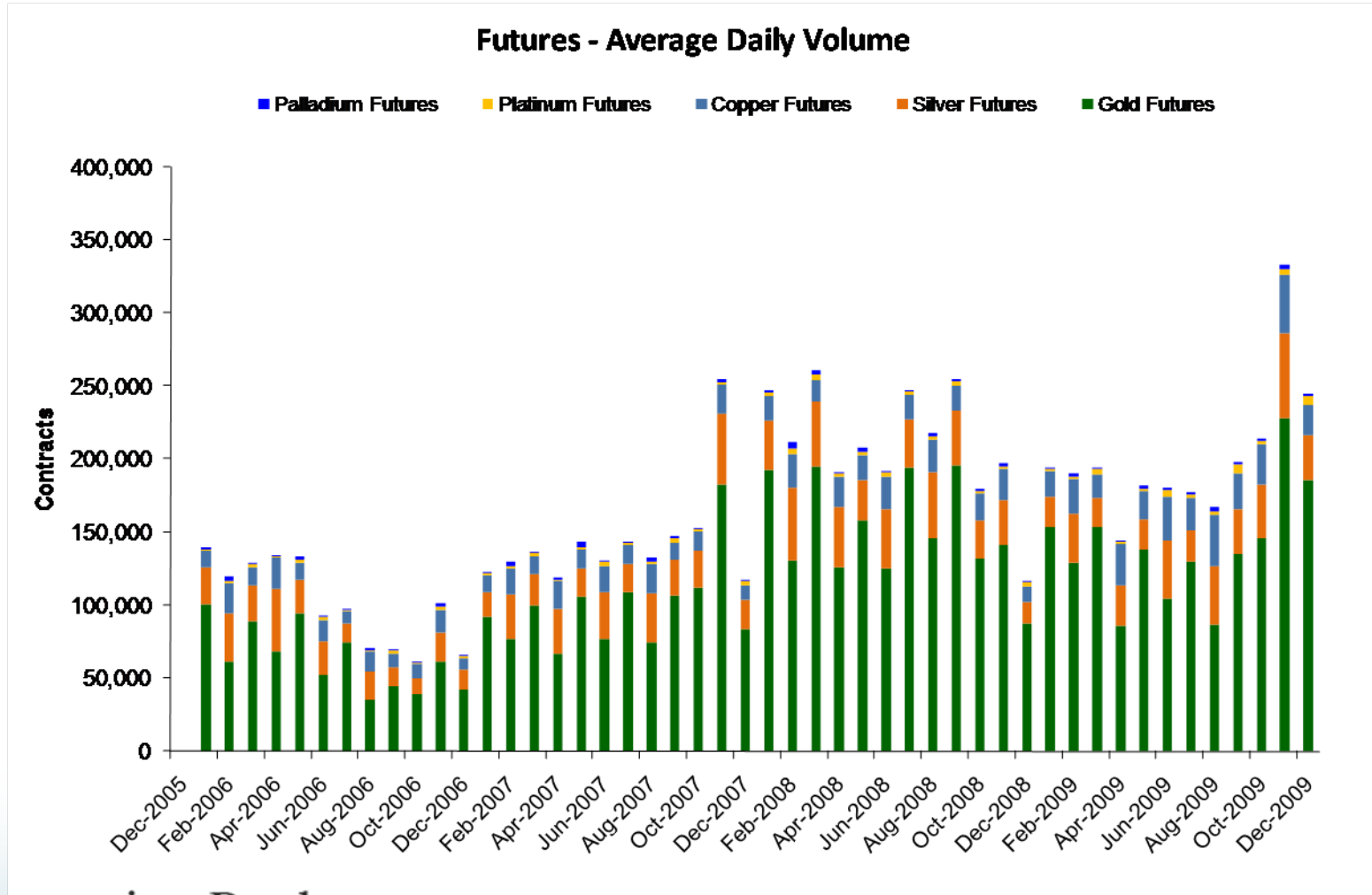
Disclaimer: Futures and options trading are speculative and involve risk of loss. The information in this seminar is taken from sources believed to be reliable. It is intended for information and education only and is not guaranteed by the CME Group as to accuracy, completeness, nor any trading result. It is not intended as investment advice, nor does CME Group endorse or support any product or service represented in the presentation. The views and opinions offered by individuals or their associated firms in interactive seminars are solely those of the authors, and do not necessarily represent the views of the CME Group. The Rules & Regulations of the CME and CBOT remain the authoritative source on all current contract specifications & regulations.

Why Futures vs. ETFs, Stocks?

- Near-24 hour markets; no gap risk
- Fast & accurate pricing mechanism based purely on market supply & demand
- Exchange role as centralized counterparty removes counterparty risk
- Regulated marketplace
- Futures margin system ensures customer protection, provides leverage and accommodate a greater range of trading strategies at a lower cost
- Rising volumes & liquidity in benchmark products reflects global acceptance

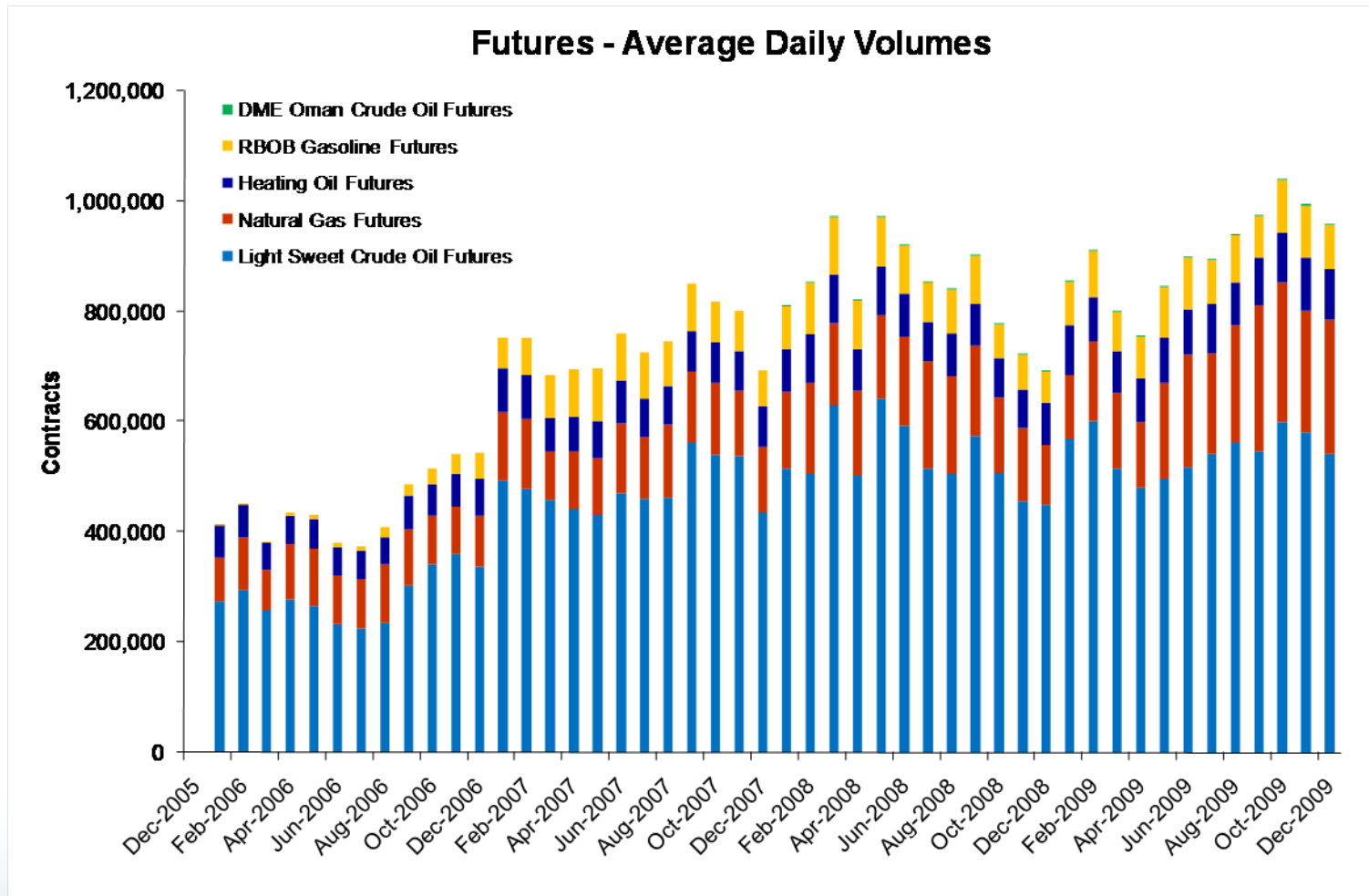
CME Group COMEX Metals Futures & Options

Where liquid markets meet solid trading opportunities

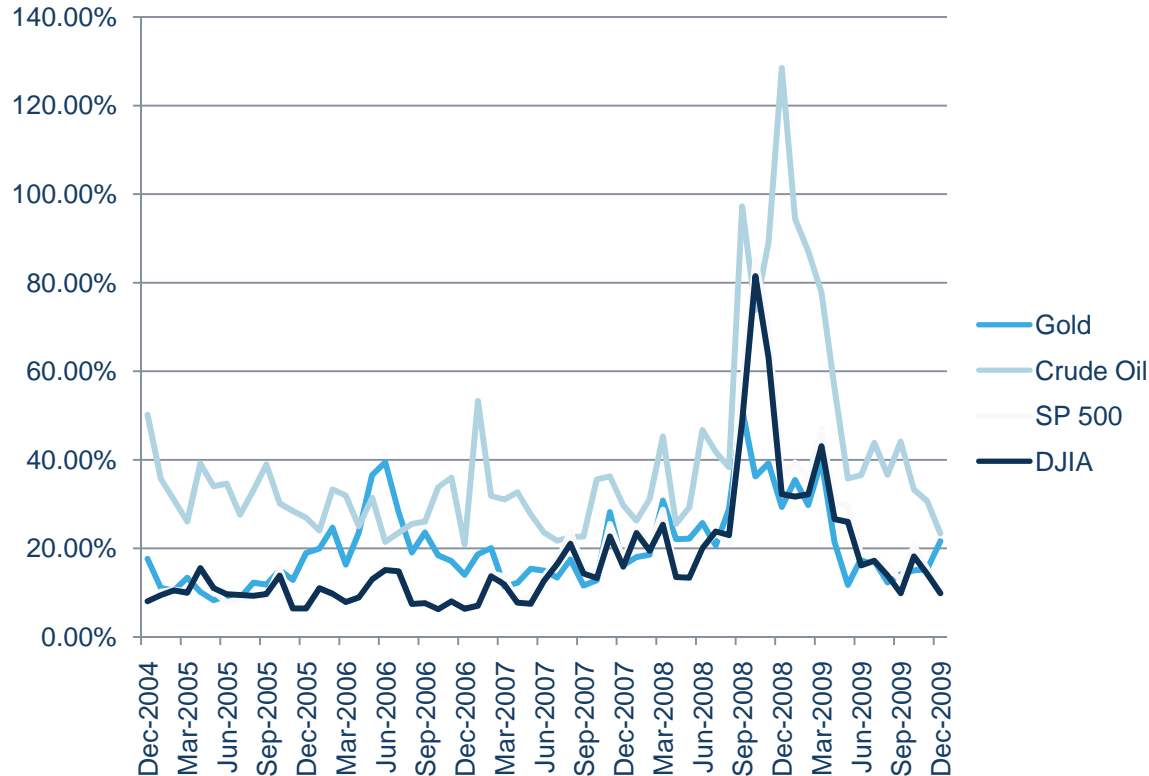


CME Group NYMEX Energy Futures & Options

Powerful trading opportunities for a global marketplace



20-day Historical Market Volatilities



For more information, visit the CME Group Resource Center at Interactivebrokers.com under “Exchanges Around the World” on the Education tab.

Trading Related Markets – Equities & Gold

Anthony Drager,
Founder/President of AntTrading, Inc. and Frank Futures Daily Newsletter

Disclaimer: Futures and options trading are speculative and involve risk of loss. The information in this seminar is taken from sources believed to be reliable. It is intended for information and education only and is not guaranteed by the CME Group as to accuracy, completeness, nor any trading result. It is not intended as investment advice, nor does CME Group endorse or support any product or service represented in the presentation. The views and opinions offered by individuals or their associated firms in interactive seminars are solely those of the authors, and do not necessarily represent the views of the CME Group. The Rules & Regulations of the CME and CBOT remain the authoritative source on all current contract specifications & regulations.

ANT trading

A TRADING ADVISORY AND EDUCATION COMPANY

Agenda

- CONTENT
- Value a Market: Overbought/Oversold
- Review/Sizing Plan
- Psychology/Risk Management
- Your Questions

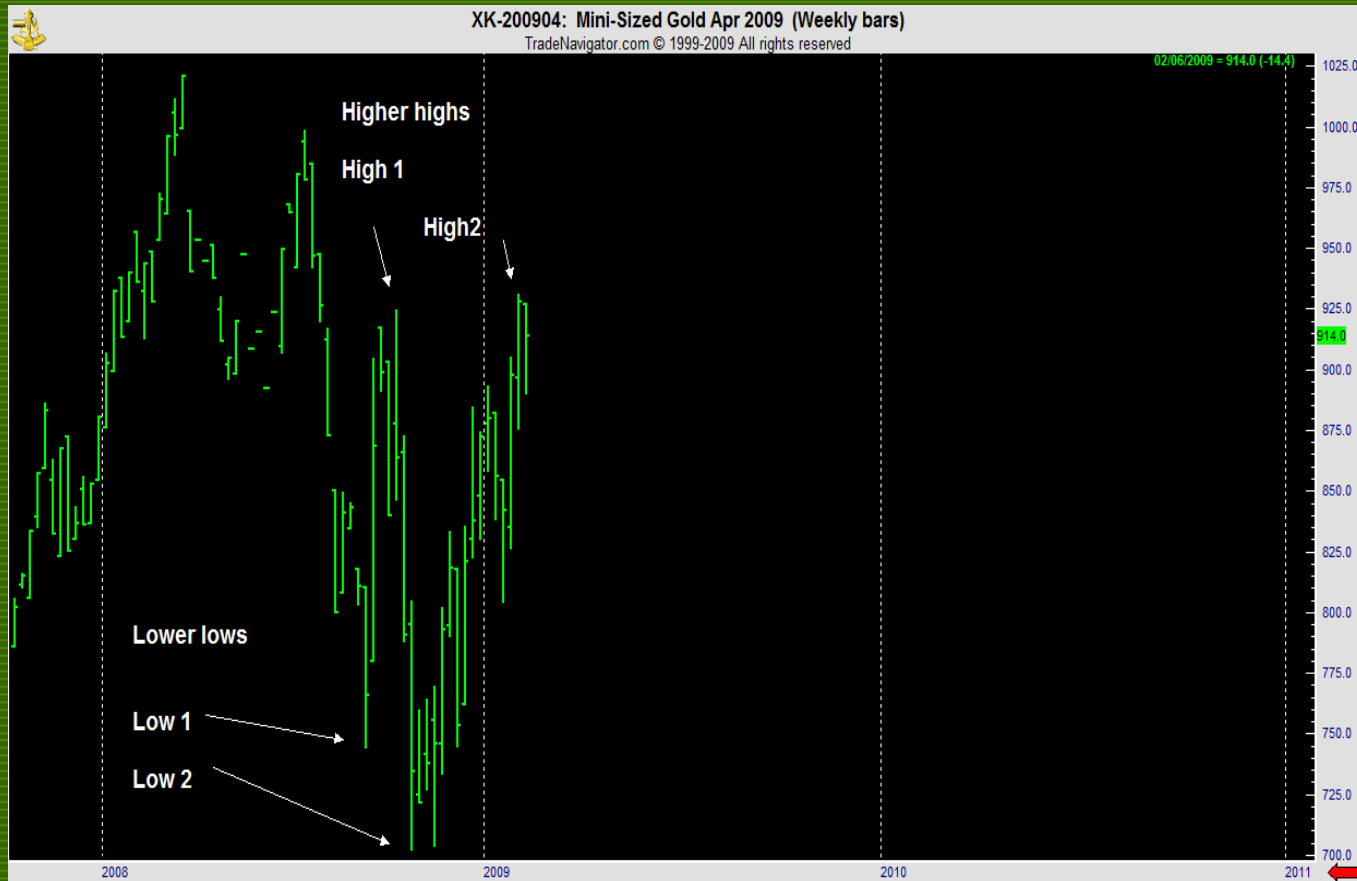
Ant Trading Inc.



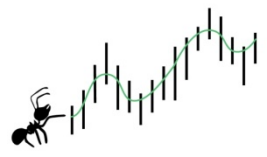
- ❑ Trading and advisory company
- ❑ Active electronic trader for 9 years
- ❑ Member-CME, CBOT, Comex, Eurex
- ❑ All information contained in this webinar is Copyright 2009 by Anthony Drager

- ❑ Trading in futures and options is speculative in nature and there is a substantial risk of loss. These investments are not suitable for everyone and only risk capital should be used.

Higher highs/Lower lows

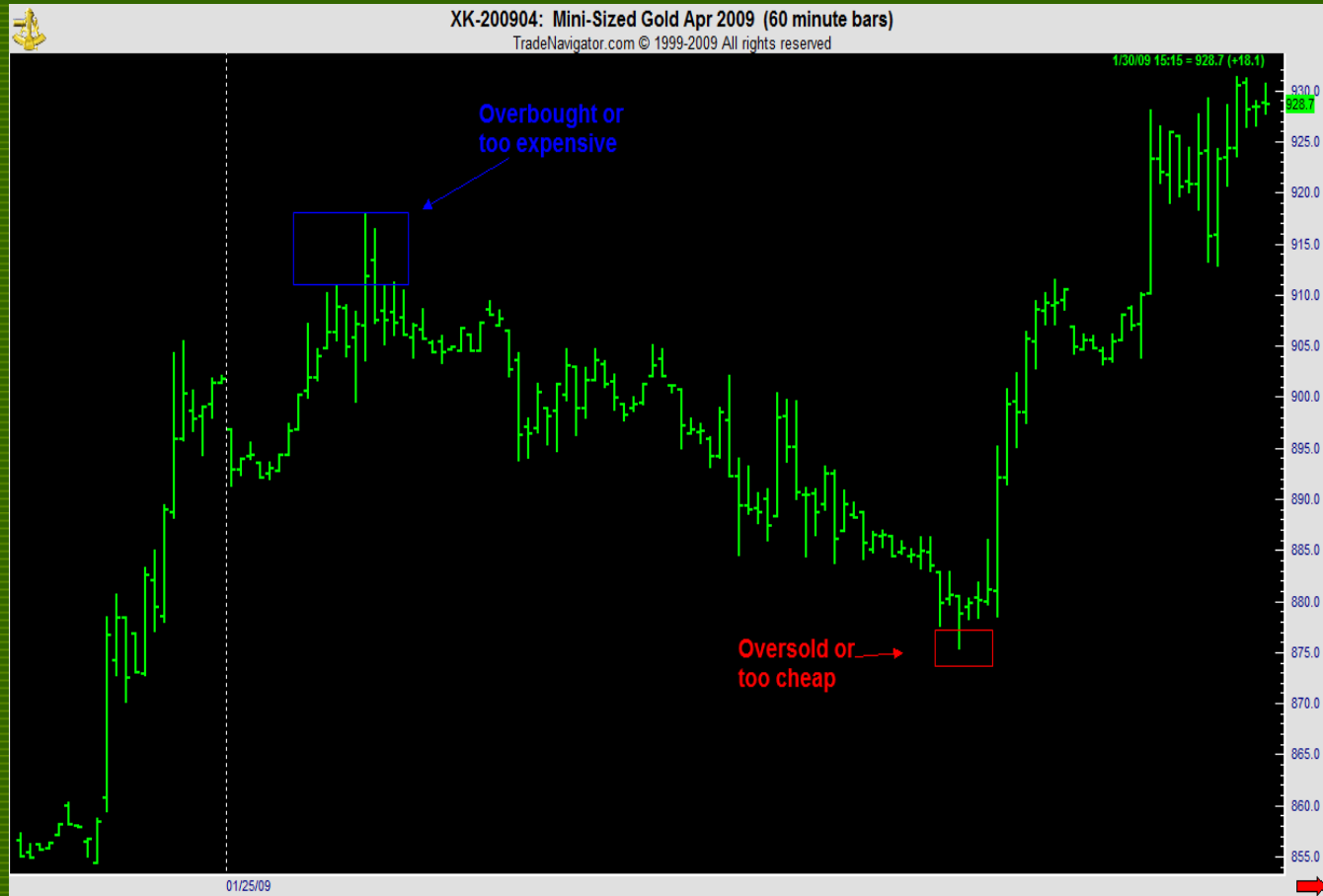


Copyright Anthony Drager 2009





Oversold/Overbought

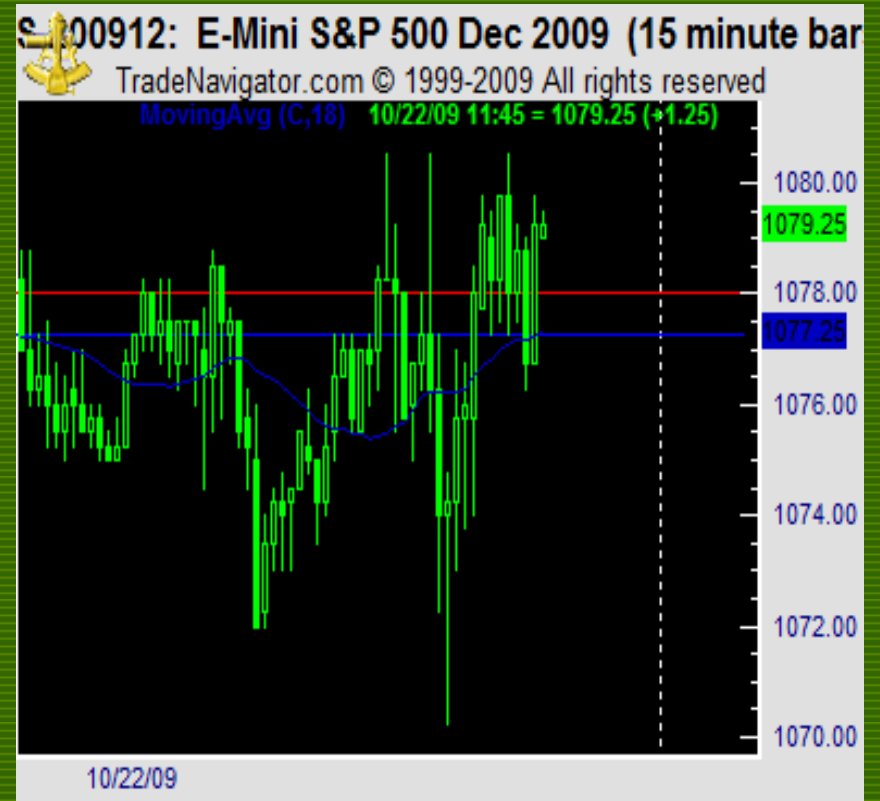


Wed - Oct. 21, 2009

Equity complex



Today Equity complex

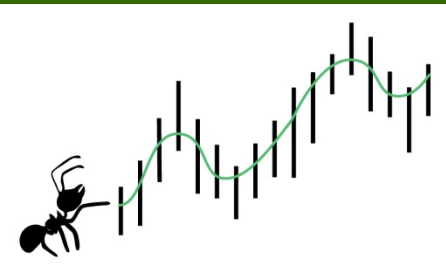


Today Equity complex



Review

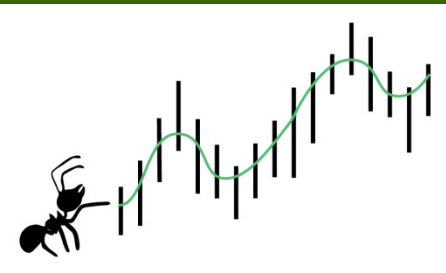
- Statistics
- Sizing Plan



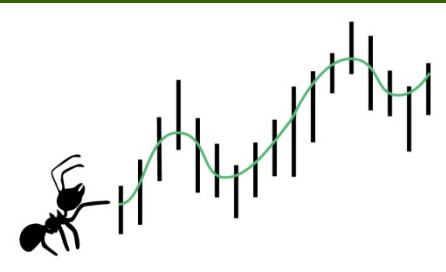
Discipline

□ Psychology

□ Risk Management



Questions for Ant Trading Inc.

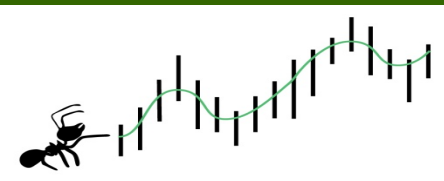


Copyright Anthony Drager 2009

Ant Trading Inc.

- ❑ 4 hour live session
- ❑ Recorded sessions on website
- ❑ All resources used to trade
- ❑ All trade setups –including equity, metal, energy, currencies
- ❑ Anthony@antradinginc.com
- ❑ Antradinginc.com

Live Trading Room-email for details



Question & Answer

Contact Information:

Anthony Drager

Founder/President of AntTrading, Inc. and
Frank Futures Daily Newsletter

www.anttradinginc.com

Interactive Brokers:

Cynthia Tomain

ctomain@interactivebrokers.com

www.Interactivebrokers.com

CME Group:

Barbara Schmidt Bailey

Barbara.Schmidt-Bailey@cmegroup.com

1.312.634.8356

www.cmegroup.com

CME Group Resource Center



Interactive Brokers Customer Resources

