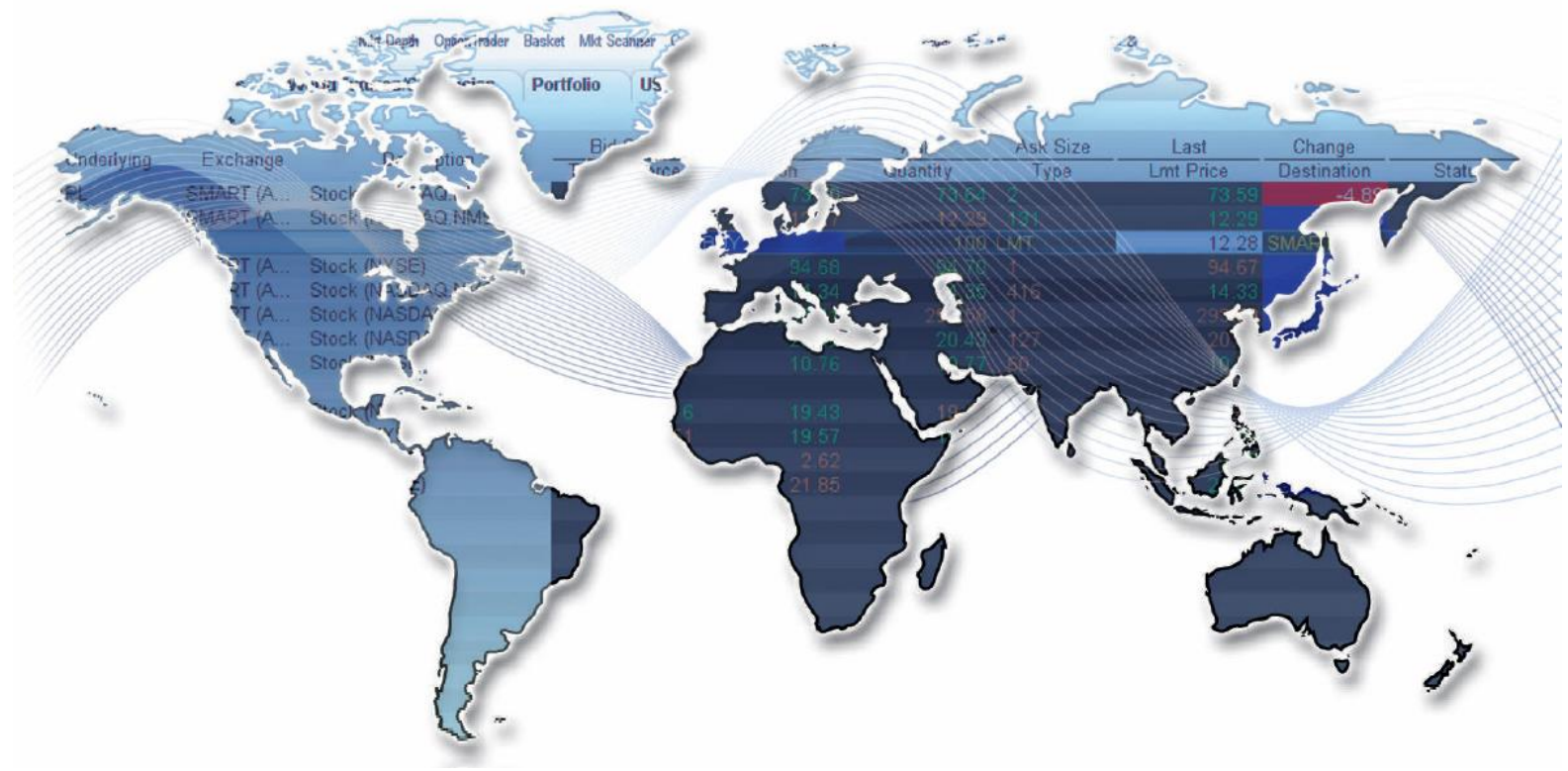


# Trading Around the World

## Utilizing Seasonal Analysis to Filter Out & Generate High Probability Trading Signals



Exchange and Industry Sponsored Webinars are presented by unaffiliated third parties. Interactive Brokers LLC is not responsible for the content of these presentations. You should review the contents of each presentation and make your own judgment as to whether the content is appropriate for you. Interactive Brokers LLC does not provide recommendations or advice.



# Welcome to Interactive Brokers

Interactive Brokers Group\* has completed its 32<sup>nd</sup> year in developing trading technology. Our mission remains unchanged:

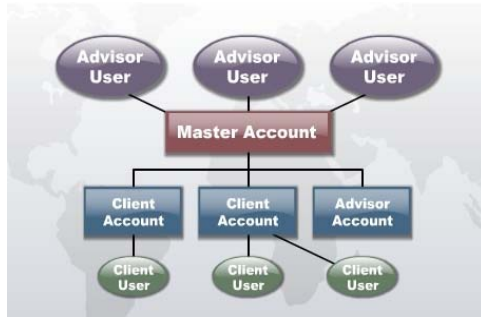
***"Create technology to provide liquidity on better terms. Compete on price, speed, size, diversity of global products and advanced trading tools."***

Interactive Brokers' headquarters are in Greenwich Connecticut, and it has offices in Chicago, Switzerland, Canada, Hong Kong, London, Sydney among others.

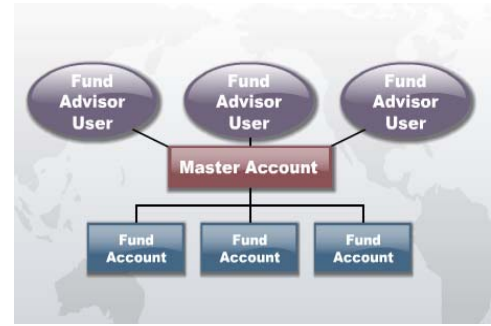
IB is regulated by the SEC, FINRA, NYSE, FSA and other regulatory agencies around the world.

\*and its predecessor companies

PROFESIONAL ADVISOR



HEDGE / MUTUAL FUND



TRADING GROUPS

SEPARATE TRADING LIMIT ACCOUNTS



NON - DISCLOSED BROKER





## Interactive Brokers Facts & Figures

- ❑ Interactive Brokers has been building direct access trading technology for 32 years to deliver real advantages to trading professionals.
- ❑ Interactive Brokers Group currently holds \$4.4 billion in equity capital
- ❑ Interactive Brokers has automated every aspect of the trade process in-house, enabling us to offer lower commissions, lower margin interest rates and higher interest paid.
- ❑ Trader Workstation provides electronic access on more than 80 market centers worldwide to stocks, options, futures, forex, bonds and more from a single, IB Universal Account.
- ❑ With the exception of foreign exchange, we trade only exchange listed products that are cleared through central clearing houses and are marked daily to external closing prices disseminated by the exchanges
- ❑ Interactive Brokers' customers are protected by \$30 million securities account protection



## Global Market Access

Stocks, Futures Options, FX, Bonds, ETF's and Warrants trading from **one single Universal Account.**



American Stock Exchange (AMEX)  
Boston Options Exchange (BOX)  
Chicago Board Options Exchange (CBOE)  
**Chicago Board of Trade (CBOE)**  
**Chicago Mercantile Exchange (CME)**  
CBOE Futures Exchange (CFE)  
International Securities Exchange (ISE)  
National Association of Securities Dealers (NASDAQ)  
New York Stock Exchange (NYSE)  
NYSE Arca, BTRADE, INET (ISLAND), DirectEdge  
OneChicago (ONE)  
Pacific Exchange (PCX)  
Philadelphia Stock Exchange (PHLX)  
**New York Mercantile Exchange (NYMEX)**  
National Stock Exchange (NSX)  
Montreal Exchange (ME)  
Toronto Stock Exchange (TSX)  
Toronto Venture Exchange (TSXV)

**New:**

Mexican Stocks and derivatives  
Spanish Stocks  
US Treasury Securities and Mutual Funds



Eurex Deutschland (formerly DTB)  
Eurex Schweiz (formerly SOFFEX)  
XETRA (formerly IBIS)  
EDX London Limited (formerly OMLX, Sweden)  
Euronext Amsterdam  
Euronext Brussels  
Euronext Liffe  
Euronext Paris  
Euronext LIFFE, London  
Intercontinental Exchange, ICE (formerly IPE)  
London Stock Exchange (LSE)  
Stockholm Fondborgs (SFB)  
Swiss Exchange (SWX, VirtX)  
Spanish Futures & Options Exchange (MEFF)  
Italiana Borsa (IDEM division)



Hong Kong Futures Exchanges (HKFE)  
Stock Exchange of Hong Kong (SEHK) (SEOCH)  
Australian Stock Exchange (ASX)  
Sydney Futures Exchange (SFE)  
Singapore Exchange (SGX)  
Tokyo Stock Exchange (TSE.JPN)  
Korea Stock Exchange (KSE)  
Osaka Securities Exchange (OSE.JPN)



## IB Key Highlights

- Low Costs
- Risk Control (real-time margin system)
- IB Universal Account<sup>SM</sup>
- IB SmartRouting<sup>SM</sup>
- Flexible & Customizable Trading System
- IB Risk Navigator (market risk)
- White Labeling



# IB's Trader Workstation (TWS)

## The Professional's Gateway to the World's Markets

**OptionTrader - DBK**

File Option Chains Analytics Orders Configure Help

EUR DBK

Quote Panel

| Underlying | Exch | Description   | Position | Bid Size | Bid Price | Model | Ask Price | Ask Size | Last Price | Imp. Vol. (%) | Chg |
|------------|------|---------------|----------|----------|-----------|-------|-----------|----------|------------|---------------|-----|
| DBK        | IBIS | Stock (XE...) |          | 2,040    | 82.570    |       | 82.660    | 600      | 82.600     |               |     |
| DBK        | SBF  | Stock (DBK)   |          | 2,000    | 82.55     |       | 82.70     | 2,000    | 82.60      |               |     |

Check Margin Close Position View Account

Orders Log Execution Portfolio

| Underlying | Descript | Time in Force | Action | Quantity | Type    | Lmt. Price | Aux. Price | Cancel | Status | Order V. | Stock Ra | Stock R | Delta | Auc. Str |
|------------|----------|---------------|--------|----------|---------|------------|------------|--------|--------|----------|----------|---------|-------|----------|
|            | DAY      |               | BUY    | 0        | Default |            |            |        |        |          |          |         |       |          |

Option Chains - DBK

| Call      |       |           |            |        |           |               |               |           |       | Put       |            |        |           |        |         |       |  |  |  |
|-----------|-------|-----------|------------|--------|-----------|---------------|---------------|-----------|-------|-----------|------------|--------|-----------|--------|---------|-------|--|--|--|
| Bid Price | Model | Ask Price | Last Price | Change | Imp. Vol. | Delta         | Description   | Bid Price | Model | Ask Price | Last Price | Change | Imp. Vol. | Delta  | Gamm    |       |  |  |  |
| 8.48      | 82.62 | 8.88      | C83.42     |        | 1.0000    | JUL06 0.01... |               | 0.00      | 0.00  | C0.01     |            |        | 0.0000    | 0.000  |         |       |  |  |  |
| 6.54      | 6.77  | 6.93      | C9.54      |        | 3.165%    | 0.9659        | JUL06 74.0... |           | 0.07  | C0.04     |            |        | 3.155%    | 0.0361 | 0.01    |       |  |  |  |
| 4.76      | 4.88  | 4.96      | C5.65      |        | 2.928%    | 0.9363        | JUL06 78.0... |           | 0.06  | 0.13      | 0.14       | 0.10   | +0.02     | 2.984% | -0.0637 | 0.027 |  |  |  |
| 3.01      | 3.09  | 3.18      | C3.24      |        | -0.31     | 2.430%        | 0.7821        |           | 0.18  | 0.23      | 0.24       | 0.18   | +0.01     | 2.674% | -0.1162 | 0.047 |  |  |  |
| 1.53      | 1.59  | 1.68      | C1.53      |        | -0.30     | 2.144%        | 0.5543        |           | 0.42  | 0.24      | 0.48       | 0.38   | +0.02     | 2.419% | -0.2179 | 0.082 |  |  |  |
| 0.83      | 0.75  | 0.70      | 0.83       |        | -0.48     | 2.062%        | 0.3488        |           | 0.37  | 1.05      | 1.01       | 1.00   | +0.70     | 2.175% | -0.4157 | 0.114 |  |  |  |
| 0.18      | 0.27  | 0.24      | 0.31       |        | -0.10     | 2.056%        | 0.1592        |           | 1.97  | 2.11      | 2.05       | 1.87   | +0.25     | 2.032% | -0.8514 | 0.112 |  |  |  |
| 0.08      | 0.10  | 0.14      | 0.20       |        | -0.04     | 2.052%        | 0.0959        |           | 3.48  | 3.63      | 3.63       | 3.25   | +0.30     | 1.980% | -0.8408 | 0.072 |  |  |  |
| 0.07      | 0.07  | 0.10      | 0.09       |        | -0.05     | 2.247%        | 0.0851        |           | 4.35  | 4.54      | 4.55       | C3.78  |           | 1.914% | -0.5041 | 0.052 |  |  |  |
| 0.01      | 0.07  | 0.11      | C0.07      |        | -0.39     | 2.394%        | 0.0465        |           | 5.26  | 6.48      | 5.57       | 5.25   | +0.58     | 1.932% | -0.3349 | 0.001 |  |  |  |
| 0.06      | 0.05  | 0.10      | 0.07       |        | +0.03     | 2.821%        | 0.0339        |           | 5.24  | 6.44      | 6.54       | 6.40   | +0.78     | 0.573% | -0.9535 | 0.027 |  |  |  |
|           | 0.04  |           | C0.02      |        |           | 2.518%        | 0.0254        |           | 7.20  | 7.42      | 7.58       | C6.58  |           | 0.619% | -0.9681 | 0.015 |  |  |  |
|           | 0.03  |           | C0.01      |        |           | 2.509%        | 0.0194        |           | 8.20  | 8.41      | 8.58       | C7.57  |           | 0.689% | -0.9746 | 0.014 |  |  |  |
|           |       |           | C0.01      |        |           |               |               |           | 9.19  | 9.40      | 9.59       | 9.40   | +0.83     | 0.728% | -0.9806 | 0.011 |  |  |  |

Universal Account US7013 - Interactive Brokers Trader Workstation

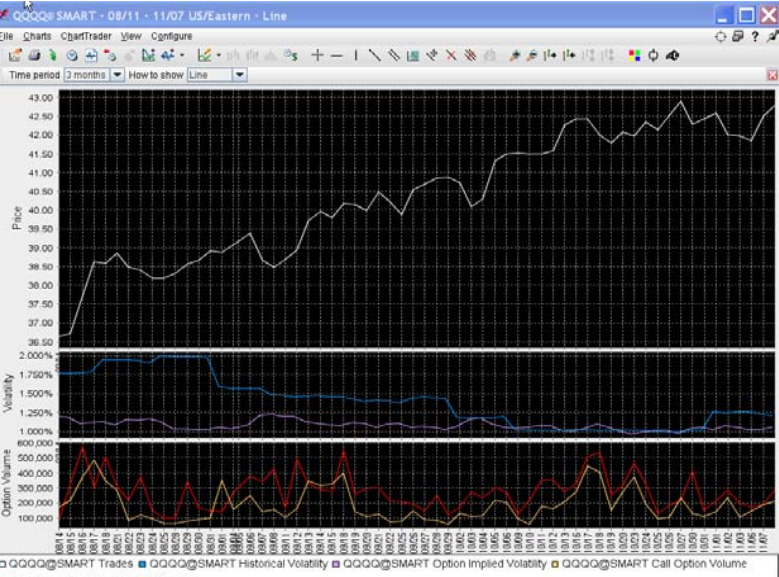
Conveniences US options Stocks worldwide FX S&P Global options Top Options Imp Vol % Gainers Pending (day)

| Underlying | Exch  | Description       | Stock | Change | % | Imp. Vol. | Delta   | Gamma | Theta | Vega | Rho |
|------------|-------|-------------------|-------|--------|---|-----------|---------|-------|-------|------|-----|
| MMR8       | SMART | (ISUPER)RUSLSIA A | 12.99 | -1.31% |   | 2.51%     | -41.19% |       | 0.001 |      |     |
| CFR8       | SMART | (INYS)RSLANDRUSL  | 8.84  | -0.23% |   | 0.80%     | -35.29% |       | 0.001 |      |     |
| CEL        | SMART | (INYS)RSLANDRUSL  | 10.92 | -0.54% |   | 0.87%     | -32.17% |       | 0.001 |      |     |
| CMNR       | SMART | (ISUPER)RUSLSIA A | 8.88  | 0.27%  |   | 0.50%     | -29.56% |       | 0.001 |      |     |
| COE        | SMART | (INYS)RSLANDRUSL  | 22.14 | 0.50%  |   | 0.50%     | -28.01% |       | 0.01  |      |     |
| ACLS       | SMART | (ISUPER)RUSLSIA A | 5.78  | -2.28% |   | 3.33%     | -27.92% |       | 0.001 |      |     |
| VCOS       | SMART | (INYS)RSLANDRUSL  | 12.03 | -0.33% |   | 1.03%     | -27.64% |       | 0.001 |      |     |
| NFT        | SMART | (INYS)RSLANDRUSL  | 6.59  | 0.90%  |   | 0.50%     | -26.99% |       | 0.001 |      |     |
| TRG        | SMART | (INYS)RSLANDRUSL  | 18.20 | -0.45% |   | 1.60%     | -23.92% |       | 0.001 |      |     |
| QSP        | SMART | (INYS)RSLANDRUSL  | 20.33 | 0.07%  |   | 0.80%     | -23.88% |       | 0.001 |      |     |
| FBA        | SMART | (INYS)RSLANDRUSL  | 6.22  | -2.41% |   | 3.46%     | -22.72% |       | 0.001 |      |     |
| NKDG       | SMART | (ISUPER)RUSLSIA A | 20.52 | -0.84% |   | 0.80%     | -22.59% |       | 0.001 |      |     |
| ACR        | SMART | (AMR)RSLANDRUSL   | 5.19  | -0.77% |   | 0.80%     | -22.59% |       | 0.001 |      |     |
| ALD        | SMART | (INYS)RSLANDRUSL  | 20.09 | 0.40%  |   | 0.59%     | -21.79% |       | 0.001 |      |     |
| BEI        | SMART | (INYS)RSLANDRUSL  | 12.78 | 0.02%  |   | 3.98%     | -20.89% |       | 0.01  |      |     |
| COV        | SMART | (ISUPER)RUSLSIA A | 8.15  | 0.85%  |   | 0.59%     | -20.89% |       | 0.001 |      |     |
| DIR        | SMART | (INYS)RSLANDRUSL  | 5.17  | 0.19%  |   | 2.29%     | -19.36% |       | 0.001 |      |     |
| LEB        | SMART | (INYS)RSLANDRUSL  | 15.14 | -0.39% |   | 0.77%     | -18.77% |       | 0.001 |      |     |
| CRN        | SMART | (ISUPER)RUSLSIA A | 2.82  | 0.31%  |   | 4.61%     | -18.50% |       | 0.001 |      |     |
| ICD        | SMART | (INYS)RSLANDRUSL  | 26.83 | -0.45% |   | 3.25%     | -18.33% |       | 0.001 |      |     |
| INTO       | SMART | (AMR)RSLANDRUSL   | 4.81  | -2.30% |   | 4.23%     | -17.55% |       | 0.001 |      |     |
| BSP        | SMART | (ISUPER)RUSLSIA A | 18.51 | -0.54% |   | 3.44%     | -17.53% |       | 0.001 |      |     |
| CLB        | SMART | (ISUPER)RUSLSIA A | 21.54 | 0.28%  |   | 5.24%     | -17.20% |       | 0.001 |      |     |
| NAT        | SMART | (INYS)RSLANDRUSL  | 35.55 | 0.20%  |   | 1.66%     | -17.16% |       | 0.001 |      |     |
| SNBS       | SMART | (ISUPER)RUSLSIA A | 4.79  | -0.24% |   | 0.60%     | -16.55% |       | 0.001 |      |     |
| ADPT       | SMART | (ISUPER)RUSLSIA A | 4.28  | -4.15% |   | 4.30%     | -16.37% |       | 0.001 |      |     |
| GTOP       | SMART | (ISUPER)RUSLSIA A | 4.34  | -0.79% |   | 0.29      | -16.09% |       | 0.001 |      |     |
| LT         | SMART | (INYS)RSLANDRUSL  | 15.84 | -0.36% |   | 15.30%    | -15.97% |       | 0.001 |      |     |
| HIIT       | SMART | (ISUPER)RUSLSIA A | 4.16  | -1.20% |   | 4.11      | -15.96% |       | 0.001 |      |     |
| COMB       | SMART | (ISUPER)RUSLSIA A | 5.97  | -0.51% |   | 4.06      | -15.90% |       | 0.001 |      |     |
| FNRS       | SMART | (INYS)RSLANDRUSL  | 3.29  | -0.30% |   | 6.09%     | -15.89% |       | 0.001 |      |     |
| FRNT       | SMART | (ISUPER)RUSLSIA A | 18.27 | -0.52% |   | 3.16%     | -15.83% |       | 0.001 |      |     |
| LEB        | SMART | (INYS)RSLANDRUSL  | 61.83 | -0.30% |   | 60.00     | -15.83% |       | 0.001 |      |     |
| SLD        | SMART | (INYS)RSLANDRUSL  | 16.73 | -0.32% |   | 16.71     | -15.85% |       | 0.001 |      |     |
| LEB        | SMART | (INYS)RSLANDRUSL  | 47.68 | 0.15%  |   | 47.48     | -15.85% |       | 0.001 |      |     |
| LTPO       | SMART | (ISUPER)RUSLSIA A | 7.13  | 0.29%  |   | 7.10      | -14.97% |       | 0.001 |      |     |
| ITF        | SMART | (INYS)RSLANDRUSL  | 11.91 | -1.18% |   | 11.77     | -14.73% |       | 0.001 |      |     |
| INTF       | SMART | (INYS)RSLANDRUSL  | 24.84 | -0.77% |   | 24.70     | -14.68% |       | 0.001 |      |     |
| LARG       | SMART | (ISUPER)RUSLSIA A | 13.95 | -1.04% |   | 3.81      | -14.10% |       | 0.001 |      |     |
| PER        | SMART | (INYS)RSLANDRUSL  | 30.41 | -0.50% |   | 30.39     | -14.09% |       | 0.001 |      |     |
| ECLE       | SMART | (ISUPER)RUSLSIA A | 13.30 | -4.32% |   | 13.30     | -14.05% |       | 0.001 |      |     |
| SFCO       | SMART | (ISUPER)RUSLSIA A | 15.12 | -1.20% |   | 15.10     | -14.02% |       | 0.001 |      |     |
| ANRW       | SMART | (ISUPER)RUSLSIA A | 9.04  | -0.55% |   | 9.06      | -13.99% |       | 0.001 |      |     |
| ASPO       | SMART | (INYS)RSLANDRUSL  | 29.53 | -1.82% |   | 29.38     | -13.92% |       | 0.001 |      |     |
| LEB        | SMART | (INYS)RSLANDRUSL  | 3.60  | -2.27% |   | 3.52      | -12.81% |       | 0.001 |      |     |

**QQQQ@SMART - 08/11 - 11/07 US/Eastern - Line**

File Charts ChartTrader View Configure

Time period 2 months How to show Line



Price

Volatility

Option Volume

Legend: QQQQ@SMART Trades, QQQQ@SMART Historical Volatility, QQQQ@SMART Option Implied Volatility, QQQQ@SMART Call Option Volume, QQQQ@SMART Put Option Volume

| Underlying | Exchange     | Description | Position | Bid Size | Bid Price | Ask Price | Ask Size | Last Price | Change | Last Size  |
|------------|--------------|-------------|----------|----------|-----------|-----------|----------|------------|--------|------------|
| QQQQ       | SMART (S...) | Stock (NMS) |          | 81       | 81.50     | 86        | 88       | 81.50      | +0.01  | 3,000,000  |
|            |              |             |          | 81       | 81.50     | 86        | 88       | 81.50      | +0.01  | 100,000    |
|            |              |             |          | 86       | 86.00     | 88        | 88       | 86.00      | +0.02  | 16,000,000 |
|            |              |             |          | 86       | 86.00     | 88        | 88       | 86.00      | +0.02  | 13,000,000 |
|            |              |             |          | 01       | 01.50     | 02        | 02       | 01.50      | +0.01  | 400,000    |
|            |              |             |          | 01       | 01.50     | 02        | 02       | 01.50      | +0.01  | 3,000,000  |

Grid of order entry windows:

- JPY USD**: Buy USD, Sell USD, Price 26, Size 600,375,000
- EUR CHF**: Buy EUR, Sell EUR, Price 98, Size 3,400,000
- GBP USD**: Buy GBP, Sell GBP, Price 06, Size 250,000
- GBP JPY**: Buy JPY, Sell JPY, Price 73, Size 76
- GBP EUR**: Buy EUR, Sell EUR, Price 07, Size 2,000,000
- ZB MAR07 ZB MAR07 Futures**: Buy ZB, Sell ZB, Price 25, Size 746
- GBP JPY**: Buy JPY, Sell JPY, Price 03, Size 1
- ZB MAR07 ZB MAR07 Futures**: Buy ZB, Sell ZB, Price 05, Size 4
- ZB MAR07 ZB MAR07 Futures**: Buy ZB, Sell ZB, Price 26, Size 2,704



**Thank You!**

---

For further information and assistance, please contact:

**Interactive Brokers Group**

Carsten Lücking  
Gotthardstrasse 3  
CH-6300 Zug, Switzerland

 +41 41 726 9570

[cluecking@interactivebrokers.ch](mailto:cluecking@interactivebrokers.ch)

# Utilizing Seasonal Analysis to Filter Out & Generate High Probability Trading Signals

**John Person, [Nationalfutures.com](http://Nationalfutures.com)**

Disclaimer: Futures and options trading are speculative and involve risk of loss. The information in this seminar is taken from sources believed to be reliable. It is intended for information and education only and is not guaranteed by the CME Group as to accuracy, completeness, nor any trading result. It is not intended as investment advice, nor does CME Group endorse or support any product or service represented in the presentation. The views and opinions offered by individuals or their associated firms in interactive seminars are solely those of the authors, and do not necessarily represent the views of the CME Group. The Rules & Regulations of the CME and CBOT remain the authoritative source on all current contract specifications & regulations.

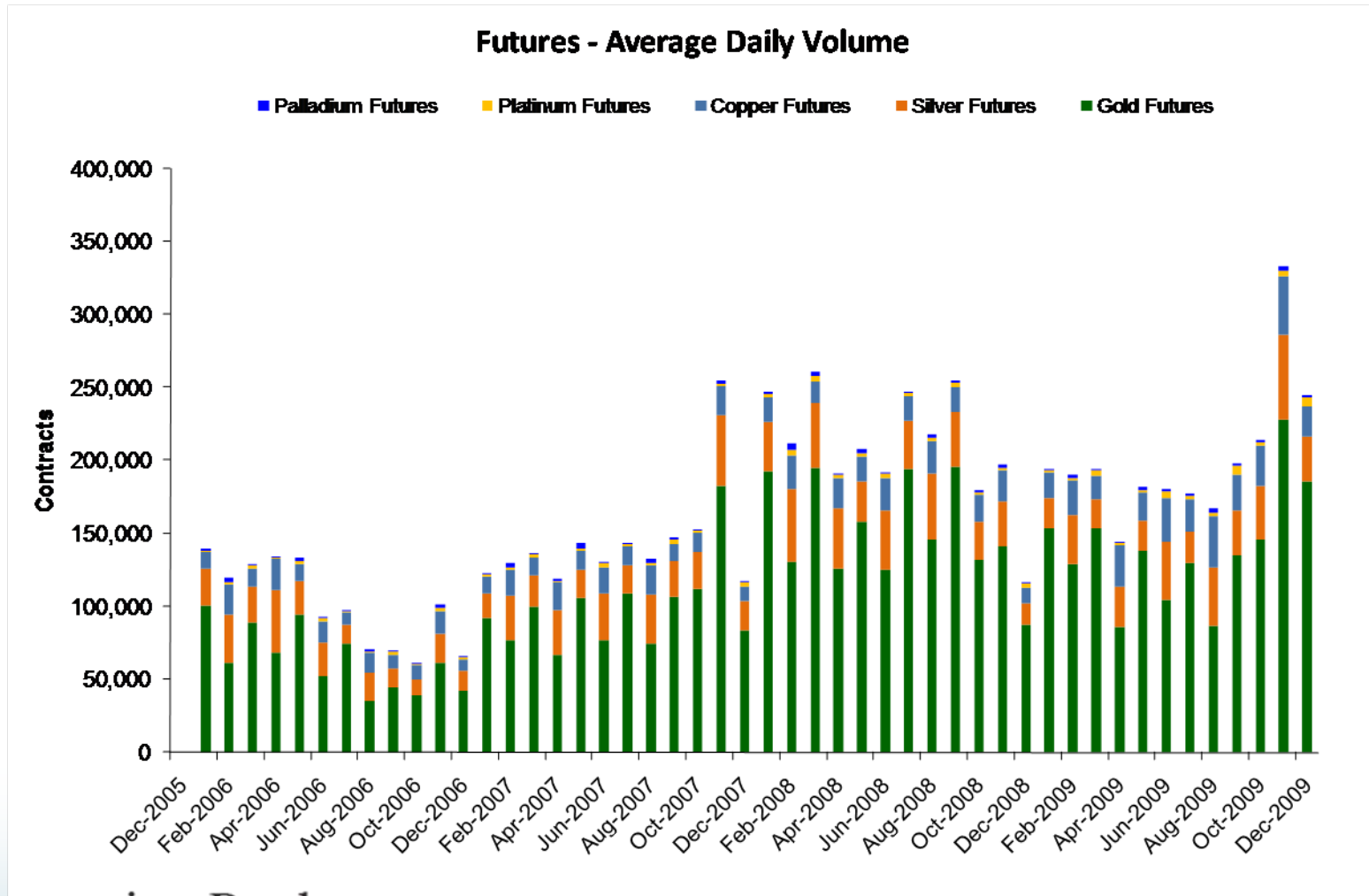


# Why Futures vs. ETFs, Stocks?

- Near-24 hour markets; no gap risk
- Fast & accurate pricing mechanism based purely on market supply & demand
- Exchange role as centralized counterparty removes counterparty risk
- Regulated marketplace
- Futures margin system ensures customer protection, provides leverage and accommodate a greater range of trading strategies at a lower cost
- Rising volumes & liquidity in benchmark products reflects global acceptance

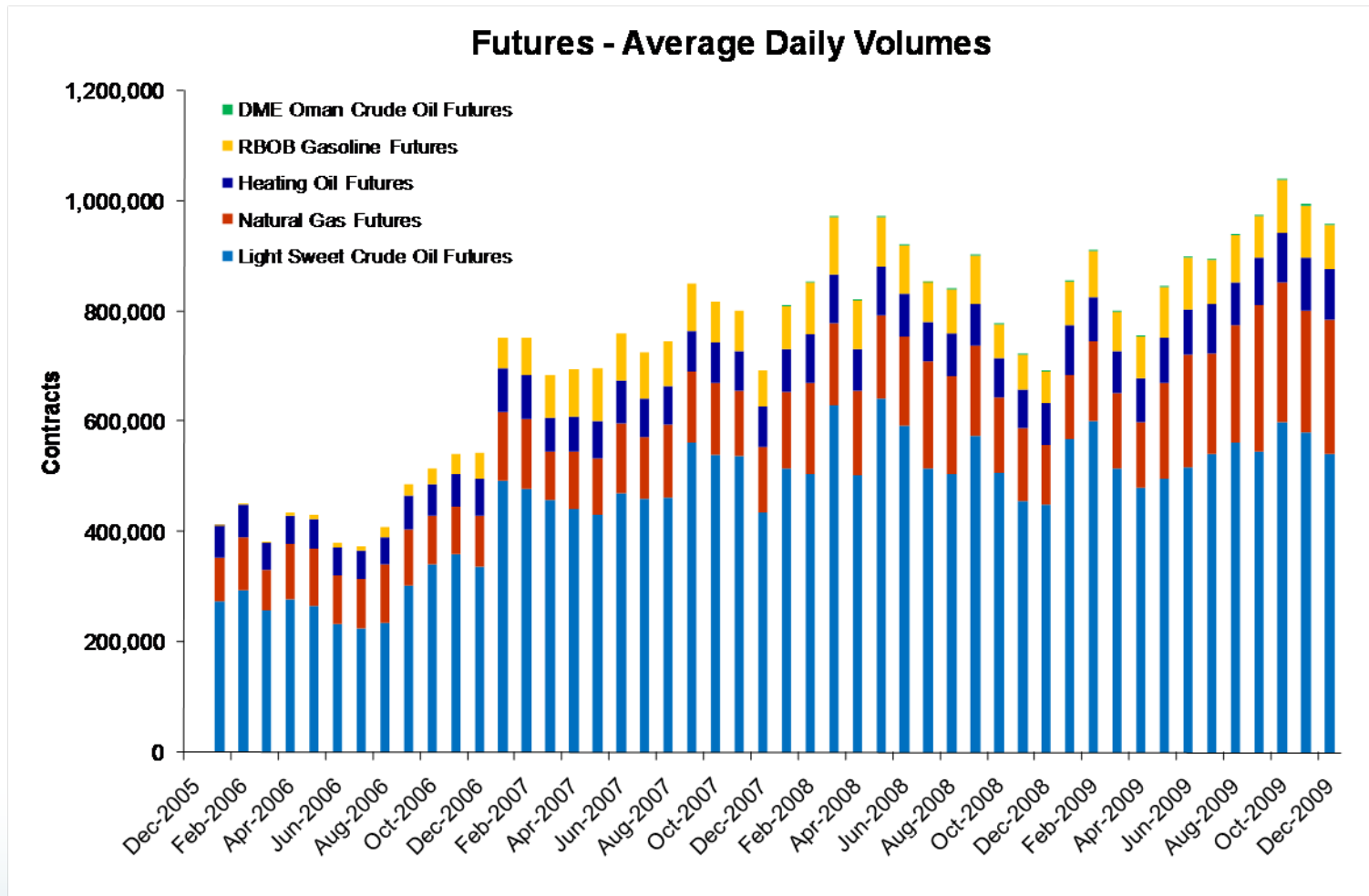
# CME Group COMEX Metals Futures & Options

*Where liquid markets meet solid trading opportunities*



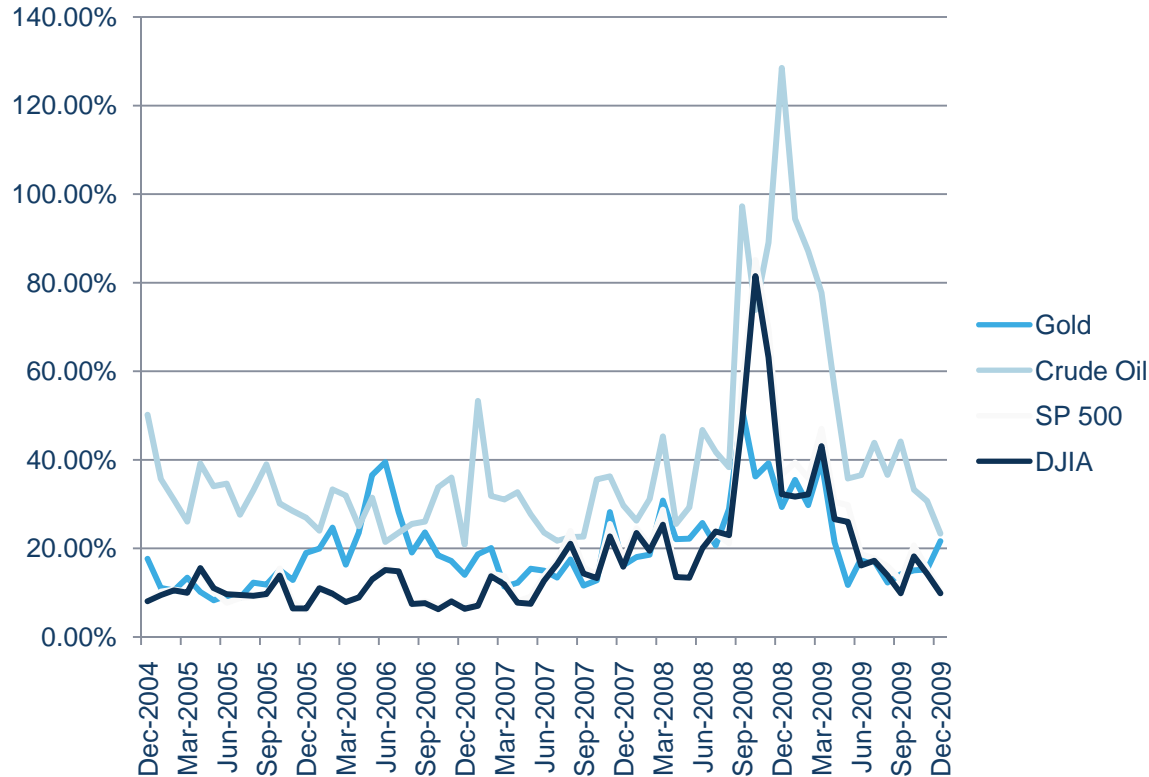
# CME Group NYMEX Energy Futures & Options

*Powerful trading opportunities for a global marketplace*





# 20-day Historical Market Volatilities



***For more information, visit the CME Group Resource Center at [Interactivebrokers.com](http://Interactivebrokers.com) under “Exchanges Around the World” on the Education tab.***

# Utilizing Seasonal Analysis to Filter Out & Generate High Probability Trading Signals

**John Person, [Nationalfutures.com](http://Nationalfutures.com)**

Disclaimer: Futures and options trading are speculative and involve risk of loss. The information in this seminar is taken from sources believed to be reliable. It is intended for information and education only and is not guaranteed by the CME Group as to accuracy, completeness, nor any trading result. It is not intended as investment advice, nor does CME Group endorse or support any product or service represented in the presentation. The views and opinions offered by individuals or their associated firms in interactive seminars are solely those of the authors, and do not necessarily represent the views of the CME Group. The Rules & Regulations of the CME and CBOT remain the authoritative source on all current contract specifications & regulations.



# Utilizing Seasonal Analysis to Filter Out & Generate High Probability Trading Signals

Presented By:

**John L. Person III, C.T.A.**

founder

[Nationalfutures.com](http://Nationalfutures.com)



# Disclosures

- Copyright © 1999-2010 by John L Person III, Palm Beach, FL 33480. The opinions presented, are for informational and educational purpose only. By law I must submit this disclaimer:
- There is no warranty of profits as a result of using these or any methods.
- Past performance is not indicative of future results.
- The use of "stop loss" or "stop limit" orders will not necessarily limit your losses to the intended amounts, since market conditions may make it impossible to execute such orders. Any decision to purchase or sell as a result of the opinions expressed in this report will be the full responsibility of the person authorizing such transaction.
- It is unlawful to reproduce, distribute or exhibit this material to anyone other than the individual assigned.
- You cannot reproduce this material without express written consent of the author, John L. Person and authorized by John Person Inc.

# Seasonal Price Analysis

- Traders can analyze the change in the price direction of markets through several timeframes: secular, cyclical and seasonal.
- Seasonal price patterns follow a trend within a year and conform to that pattern over a number of years.
- The changes are created by regular shifts in supply and demand.
- **Trading with the seasonal price flow or dominant trend is like swimming with the current!**

**Trading *Against* the Current, or Dominant Trend, is  
Very Frustrating!**





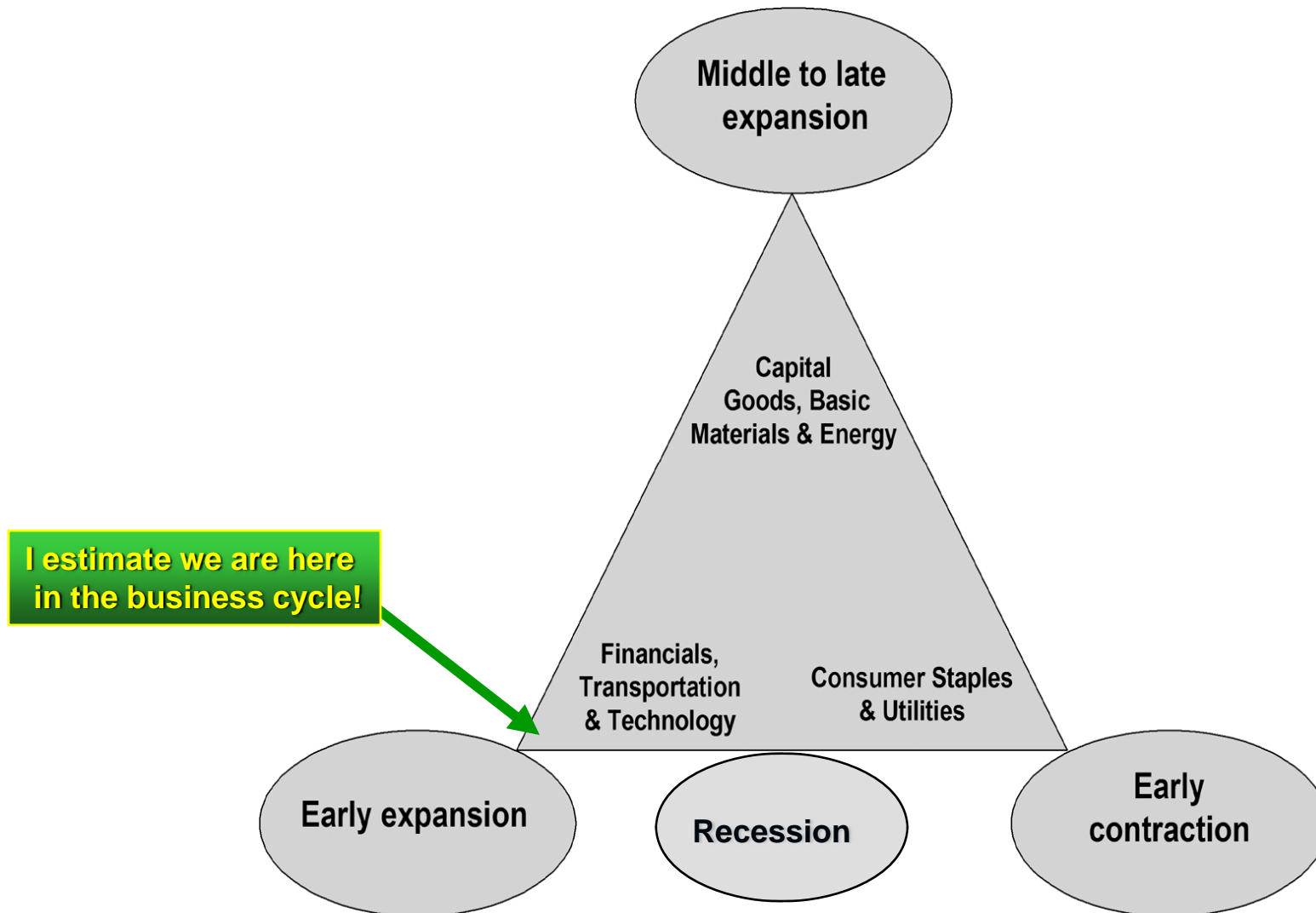
# Seasonal Price Analysis

- One must be careful because specific events can mute, magnify or even alter these seasonal cycles. For example, if overall economic conditions change, as in the case of a recession, this may reduce demand and, thereby, cause an increase in supply-limiting price gains.
- Also, the supply of goods and services during certain times of the year is increased and demand is low. This is seen in markets for equity, *precious metals*, financials, agriculture and livestock.

# The Business Cycle- The Big Picture

- Money flows into the equity markets go into “sector rotation” as the economy goes into expansion to contraction back to expansion.
- Technology stocks led the late 90’s: home builders led in 2003, oil led the way in 2007-2008.
- Consumer staples, blue chips, and utilities were in vogue as the economy showed weakness.
- Technology & Commodities, especially Precious Metals have led the way in 2009 & beginning 2010.

# The Business Cycle- The Big Picture



# Trading Rules for Seasonal Studies

- Read Background Information on current condition (USDA Reports).
- Gather statistics (Seasonal price patterns).
- Understand macro economic cycle (helps to mute or magnify expectations).
- Use price forecasting tools to target potential price ranges (Pivot Points, Fibonacci numbers).
- Time Trade entry tools based on technical analysis triggers and price patterns.
- Use risk management and have an exit strategy.

# Seasonal Pros & Cons

## ■ Pro's

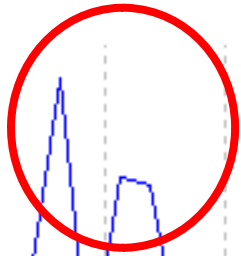
- Guide traders to typical changes in price direction.
- Enables traders to give better price forecasting models.
- Aids in establishing leverage, risk & reward targets.
- All traders can benefit.

## ■ Con's

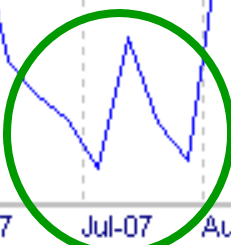
- Does not give exact time and price of each move.
- Not reliable to anticipate supply/demand imbalances.
- Simplicity of this tool enables the user to forget using confirming indicators (not all years are created equal).



GC-057: Gold Comex (Pit) Cont Liq. (Weekly bars)



**Seasonal Cycles Help  
Identify Annual Highs &  
Lows**



Jan-07 Feb-07 Mar-07 Apr-07 May-07 Jun-07 Jul-07 Aug-07 Sep-07 Oct-07 Nov-07 Dec-07 Jan-08

-0.0696

6  
4  
2  
-2  
-4  
-6  
-8  
-10  
-12  
-14

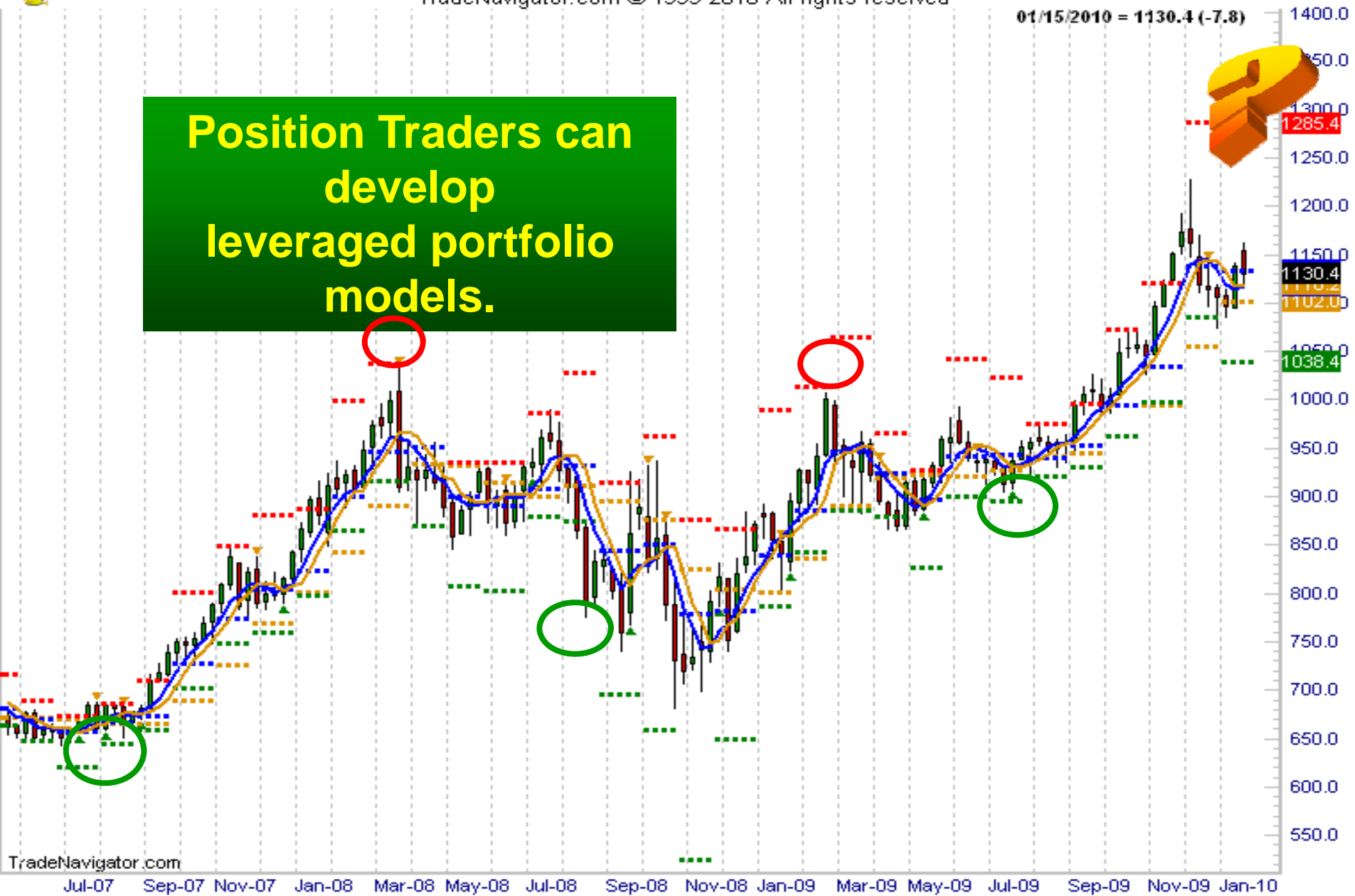


# Gold

TradeNavigator.com © 1999-2010 All rights reserved

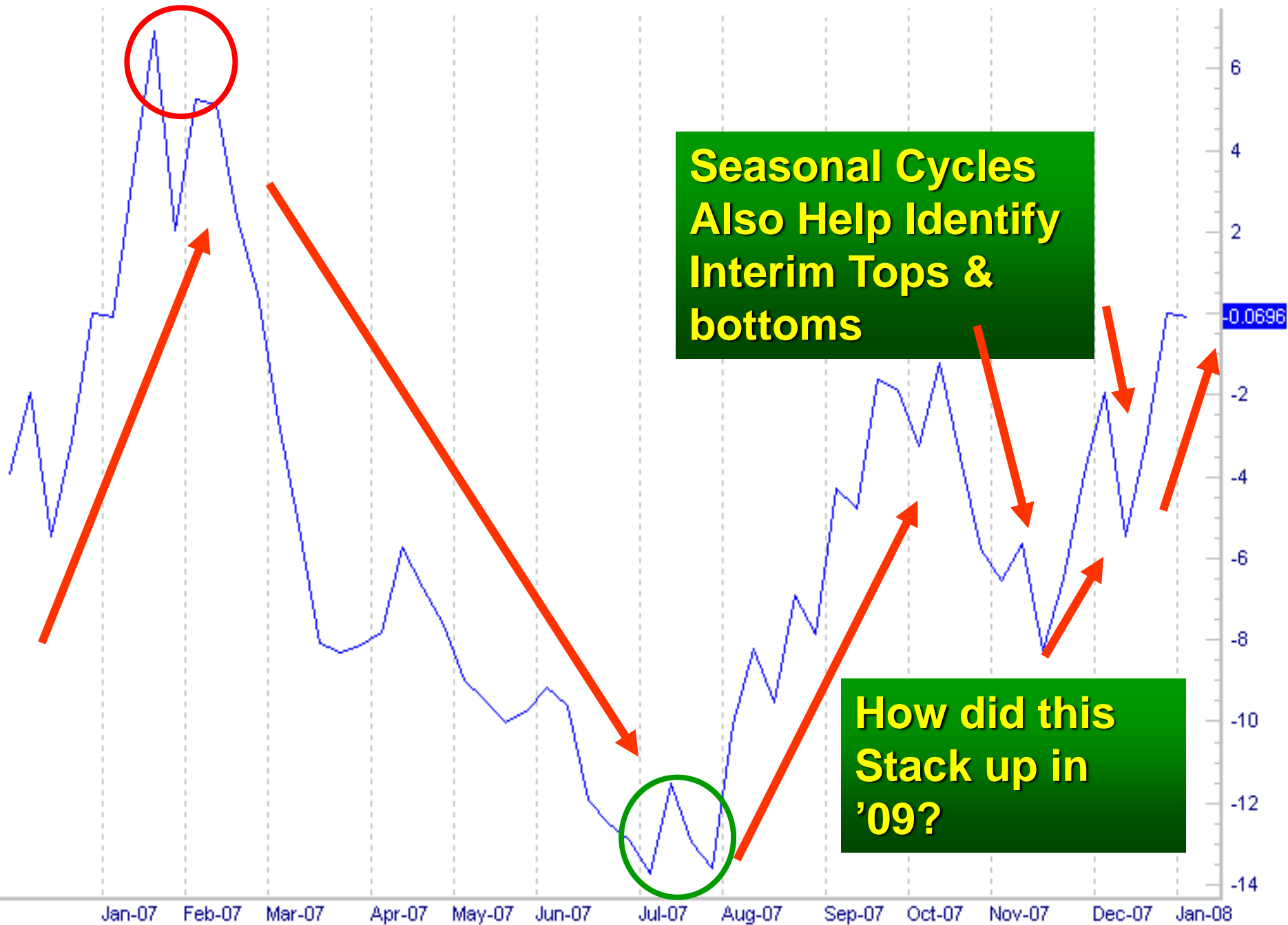
01/15/2010 = 1130.4 (-7.8)

**Position Traders can  
develop  
leveraged portfolio  
models.**



TradeNavigator.com

GC-057: Gold Comex (Pit) Cont Liq. (Weekly bars)



**Seasonal Cycles  
Also Help Identify  
Interim Tops &  
bottoms**

**How did this  
Stack up in  
'09?**

-0.0696

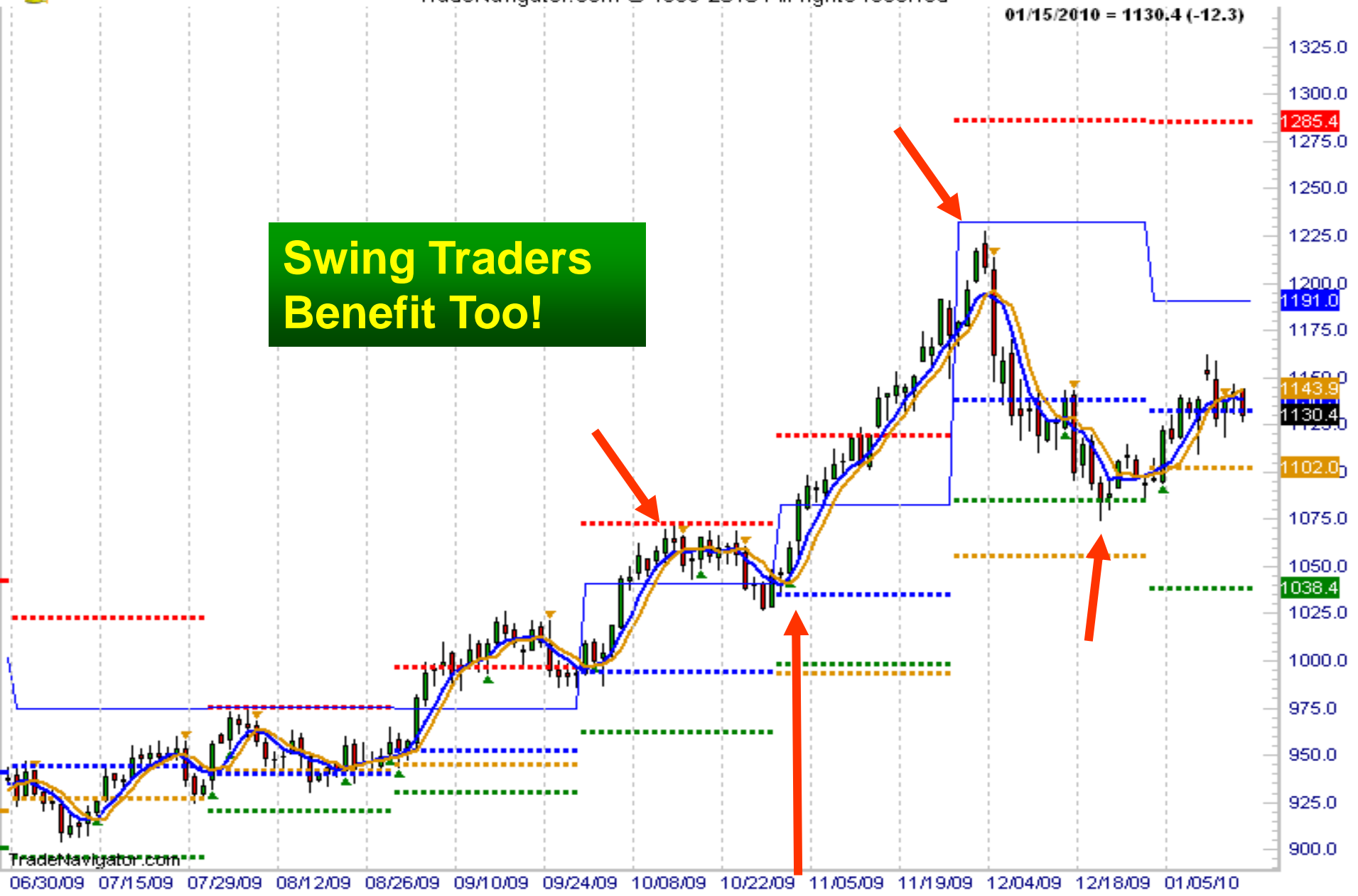


# Gold

TradeNavigator.com © 1999-2010 All rights reserved

01/15/2010 = 1130.4 (-12.3)

**Swing Traders  
Benefit Too!**





# Gold

TradeNavigator.com © 1999-2010 All rights reserved

1/5/10 03:15 = 1126.8 (+5.2)



**Day Traders –  
Stay with the trend.**









# SI2-057: Silver Comex (Comb) Cont Liq. (Weekly bars)

TradeNavigator.com © 1999-2009 All rights reserved



# Nothing is Created Equal

- Notice the detached price relationship between Gold and Silver seasonal high and lows.
- Silver tends to make annual lows in late October through early December.

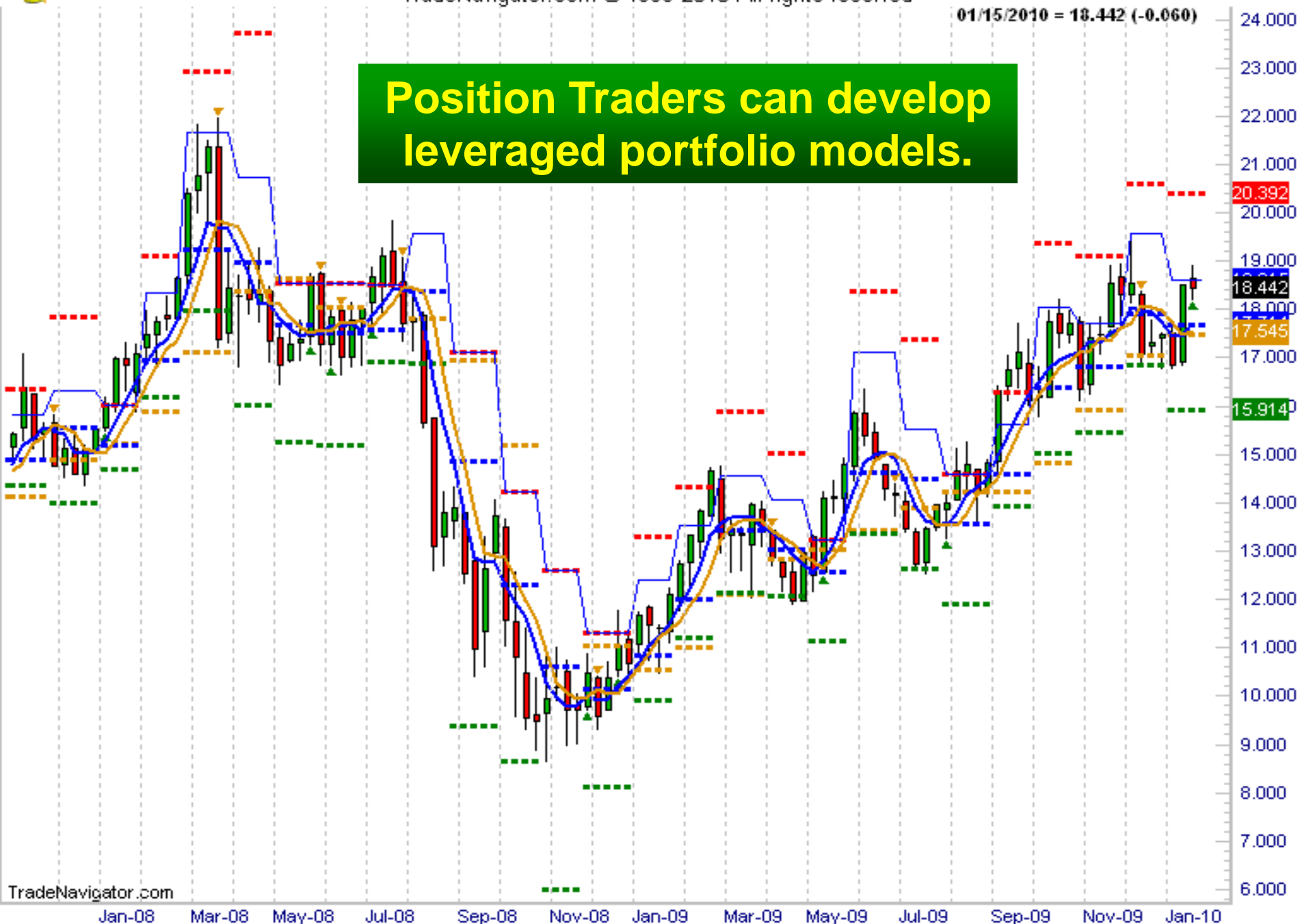


# Silver

TradeNavigator.com © 1999-2010 All rights reserved

01/15/2010 = 18.442 (-0.060)

**Position Traders can develop leveraged portfolio models.**

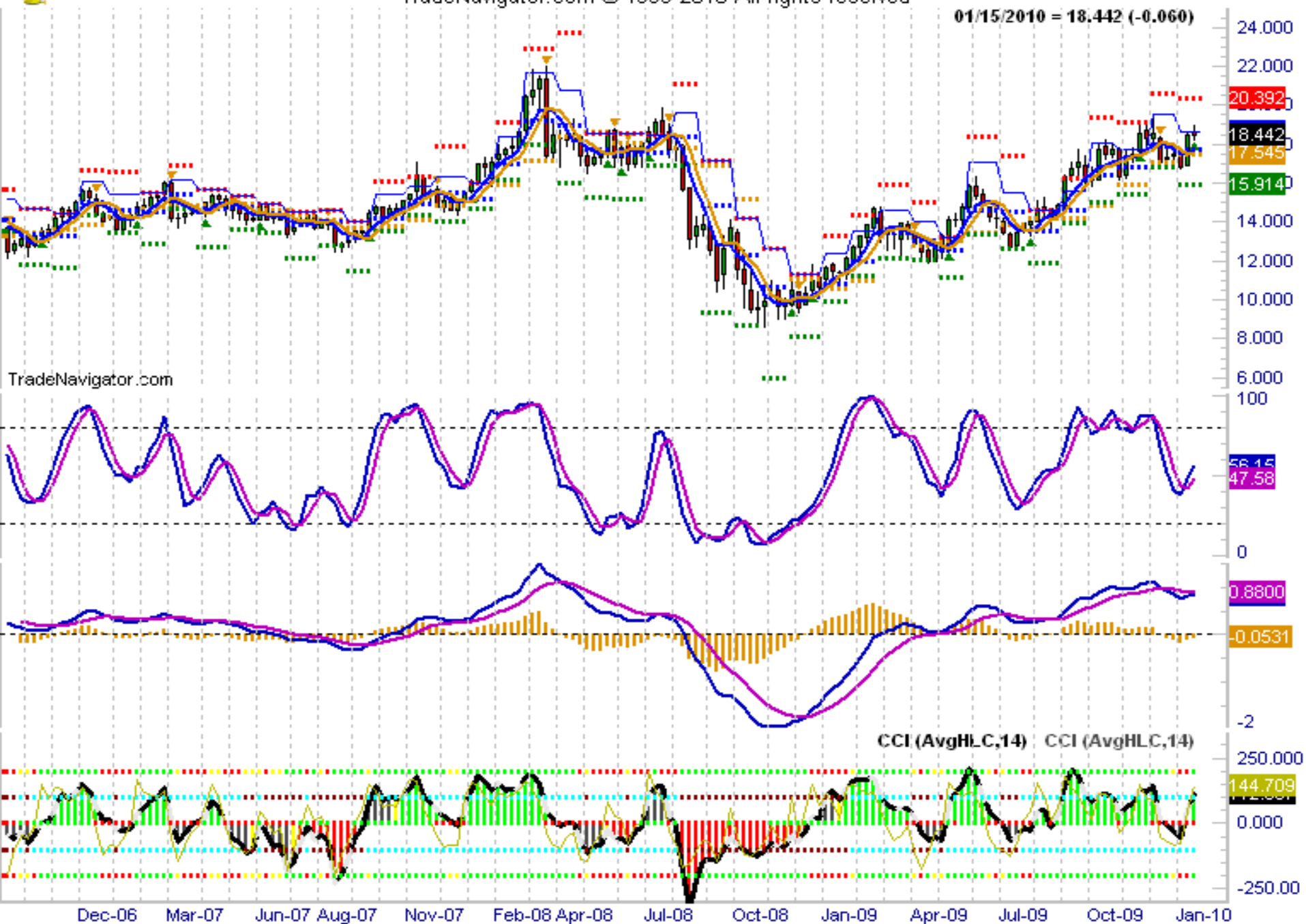




# Silver

TradeNavigator.com © 1999-2010 All rights reserved

01/15/2010 = 18.442 (-0.060)







# Silver

TradeNavigator.com © 1999-2010 All rights reserved

01/15/2010 = 18.442 (-0.245)

**Swing Traders  
Benefit Too!**





# Silver

TradeNavigator.com © 1999-2010 All rights reserved

1/4/10 10:42 = 1753.5 (+62.5)

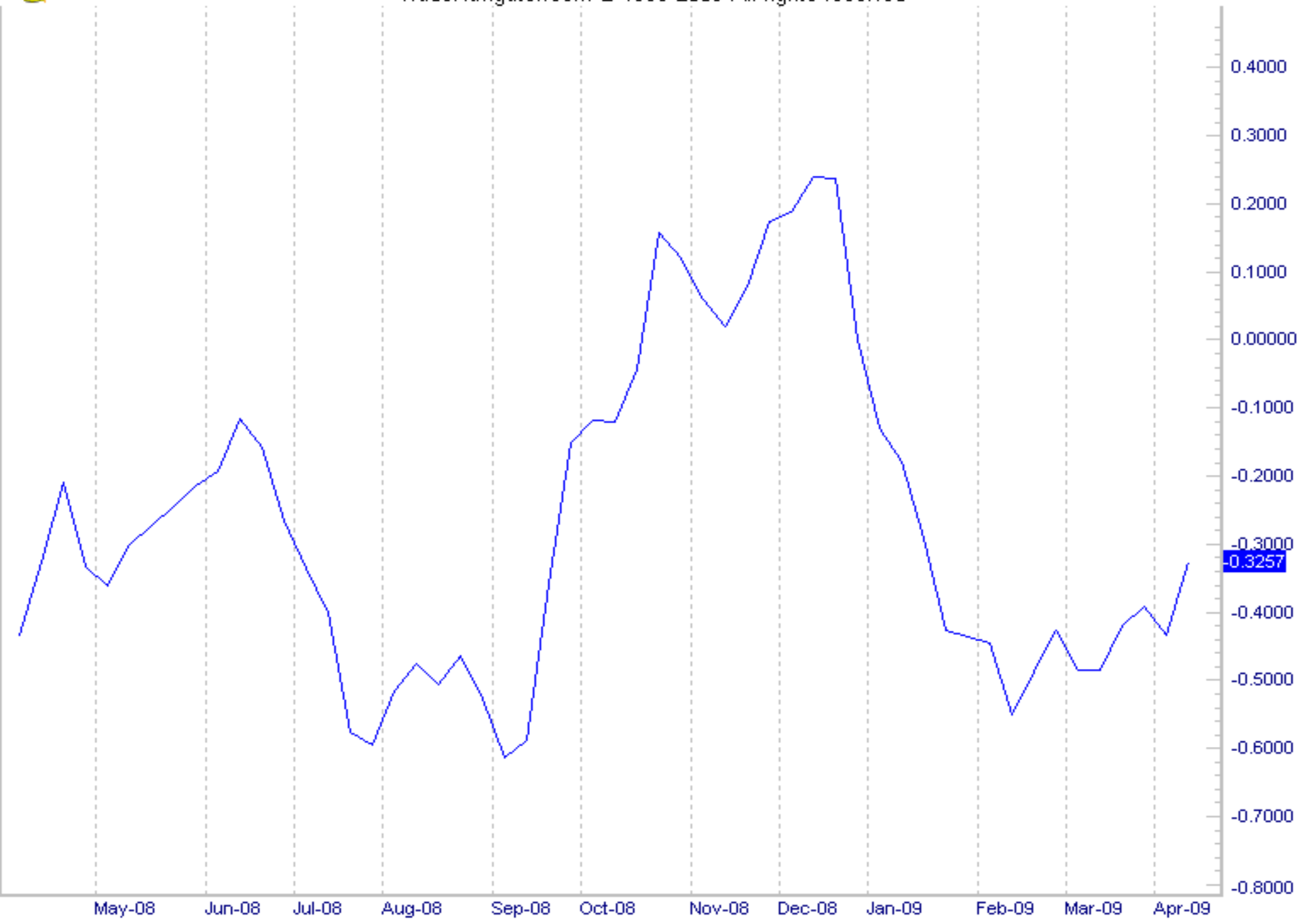


**Day Traders -  
Stay with the trend.**



# NG2-057: Natural Gas NY (Comb) Cont Liq (Weekly bars)

TradeNavigator.com © 1999-2009 All rights reserved





# NG2-057: Natural Gas NY (Comb) Cont Liq (Monthly bars)

TradeNavigator.com © 1999-2010 All rights reserved

1/29/10 10:25 = 5.461 (-0.117)

**Seasonal Lows for Feb.  
worked 7/8 years.**

**Seasonal Lows for Sept.  
worked 7/8 years.**



5.461

|                   |                         |                 |                          |   |                        |
|-------------------|-------------------------|-----------------|--------------------------|---|------------------------|
| Events & Seminars | Trading Courses & Books | Trading Systems | John Person's Newsletter | <b>Software Indicators &amp; Strategies</b> | Chat Room & University |
|-------------------|-------------------------|-----------------|--------------------------|---|------------------------|

**NationalFutures.com**  
 y indicators and trading strategies

- The Most Effective Trading Course
- Learn Proven & Effective Trading Methods
- High Powered Trading Signals
- John Person-Proprietary Indicators

**Sign Up for Our Next Event**



**John Person Software Indicators & Strategies**

Designed for Forex Trading, Stock Trading and Futures Trading. These helpful indicators will help you calculate the projected Pivot Points Support and Resistance numbers based on a proprietary set of algorithms that incorporates the Pivot Point Averages as if relates to the close and Pivot Point value.

Green arrows appear indicating a change in momentum that illustrate an entry or exit point. this is a great tool that will not only supplement other trading software, it may be the best trading tool used by individual traders today.

[more info](#)

**YAHOO! FINANCE**

Enter Symbol

Quote  Web

| NAME                                   | LAST TRADE        | CHANGE      |
|--|-------------------|-------------|
| <b>^IXIC - NAS</b><br>NASDAQ Composite | <b>\$2,287.99</b> | 28.75 1.24% |

**1 YEAR CHART**

NEWS

John Person Welcomes All Traders

**Learn why using "Candles and Pivots"™** can help you quickly identify trading opportunities by plotting changes in momentum. John's techniques can help you identify powerful and amazing turn signals.

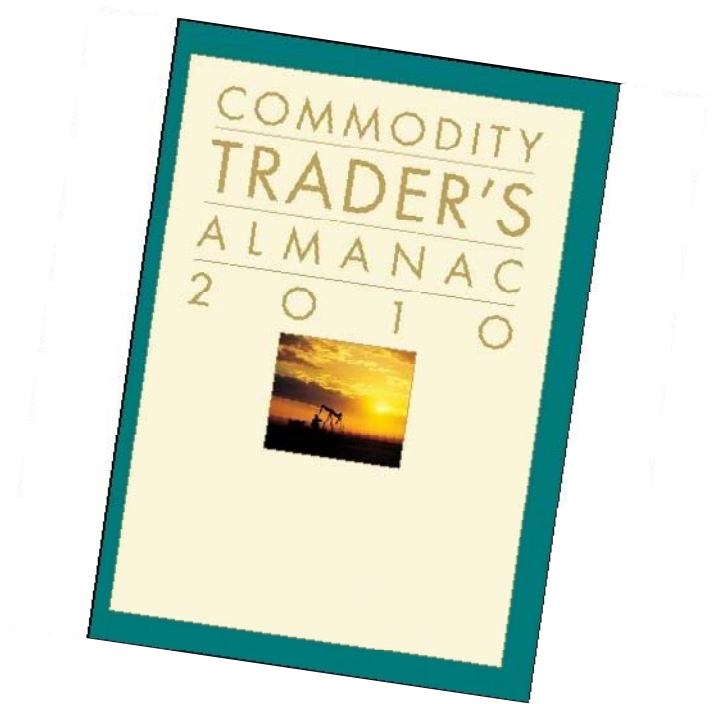
**John Person 's Calendar** - John Person developed this specialized and highly accurate method and incorporates it in his weekly Newsletter and teaches traders looking for the best approach in trading. Check his Newsletter and video updates by registering for a free trial.

**This is an independent investment research**

- John Person's Products**
- Seminar Schedules**
    - Live Seminars
    - John's schedule
    - Webinars schedule
  - John's Store**
    - Books - Courses
  - Software Plug ins**
    - Genesis Plug-ins
    - TradeStation Pivots
  - Subscriptions**
    - Newsletter

# Sign-up for 30 Day Trial & Drawing for a free copy CTA 2010

- Trial to my Newsletter and Video Updates.
- Indicator Library for Signals.
- Includes Person Sentiment Indicator
- **Sign-up for a drawing for a free copy CTA 2010!**



# The End

Contact Info :

[cgutmann@nationalfutures.com](mailto:cgutmann@nationalfutures.com)

[www.nationalfutures.com](http://www.nationalfutures.com)

(847) 730-5209



# Question & Answer

Contact Information:

**John Person**

[Nationalfutures.com](http://Nationalfutures.com)

**Interactive Brokers**

Carsten Lücking

Gotthardstrasse 3

CH-6301 Zug

[cluecking@interactivebrokers.ch](mailto:cluecking@interactivebrokers.ch)

T - 41 41 726 9570

**CME Group**

Barbara Schmidt-Bailey

[Barbara.Schmidt-Bailey@cmegroup.com](mailto:Barbara.Schmidt-Bailey@cmegroup.com)

T- 312.634.8356

[www.cmegroup.com](http://www.cmegroup.com)

CME Group Resource Center



Interactive Brokers Customer Resources

