



Dan Sheridan

Jan 7, 2009

Sheridan Options Mentoring, Inc.
www.SheridanMentoring.com



Disclaimer

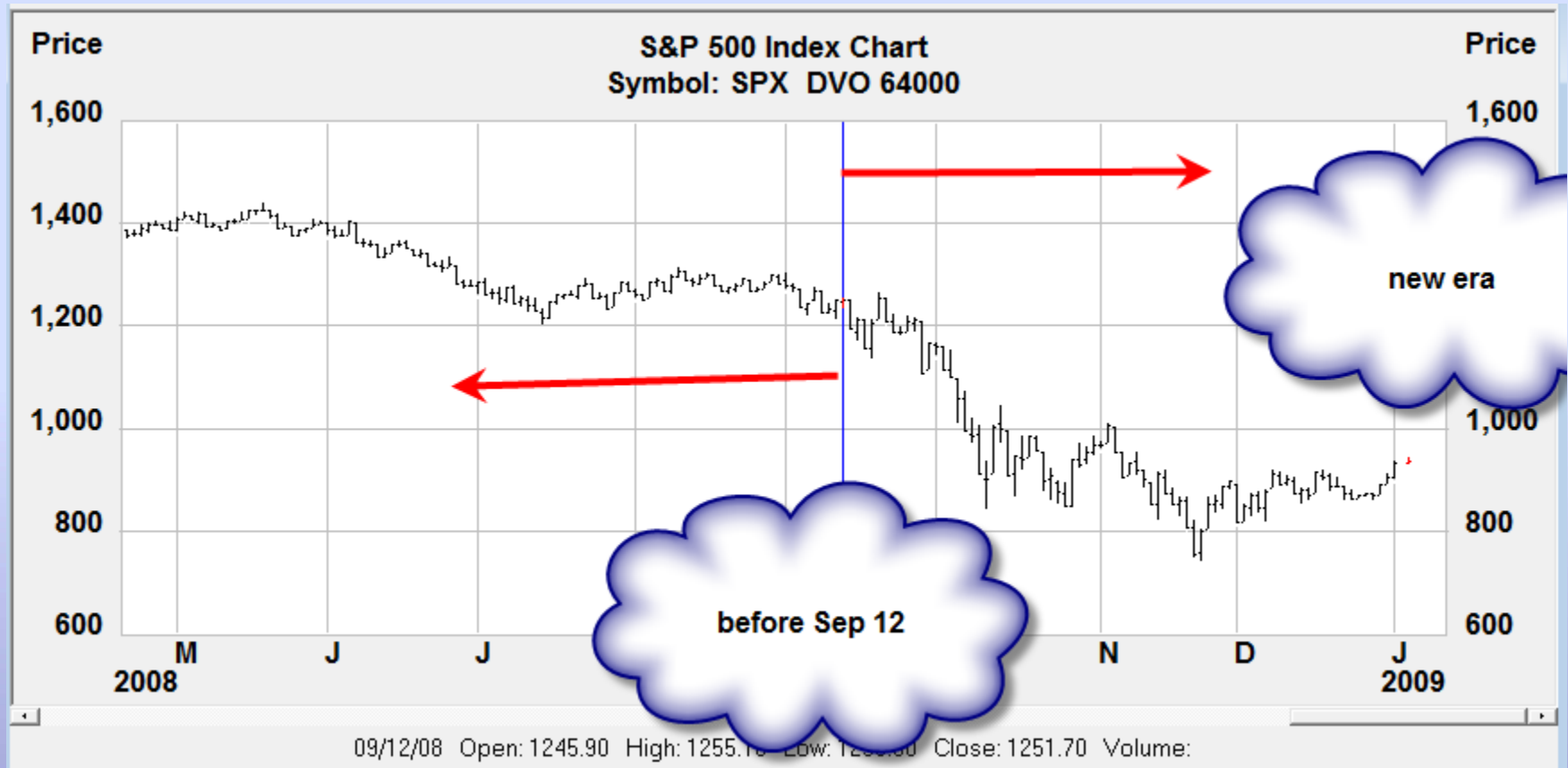
The views of third party speakers and their materials are their own and do not necessarily represent the views of Chicago Board Options Exchange, Incorporated (CBOE). Third party speakers are not affiliated with CBOE. This presentation should not be construed as an endorsement or an indication by CBOE of the value of any non-CBOE product or service described in this presentation.

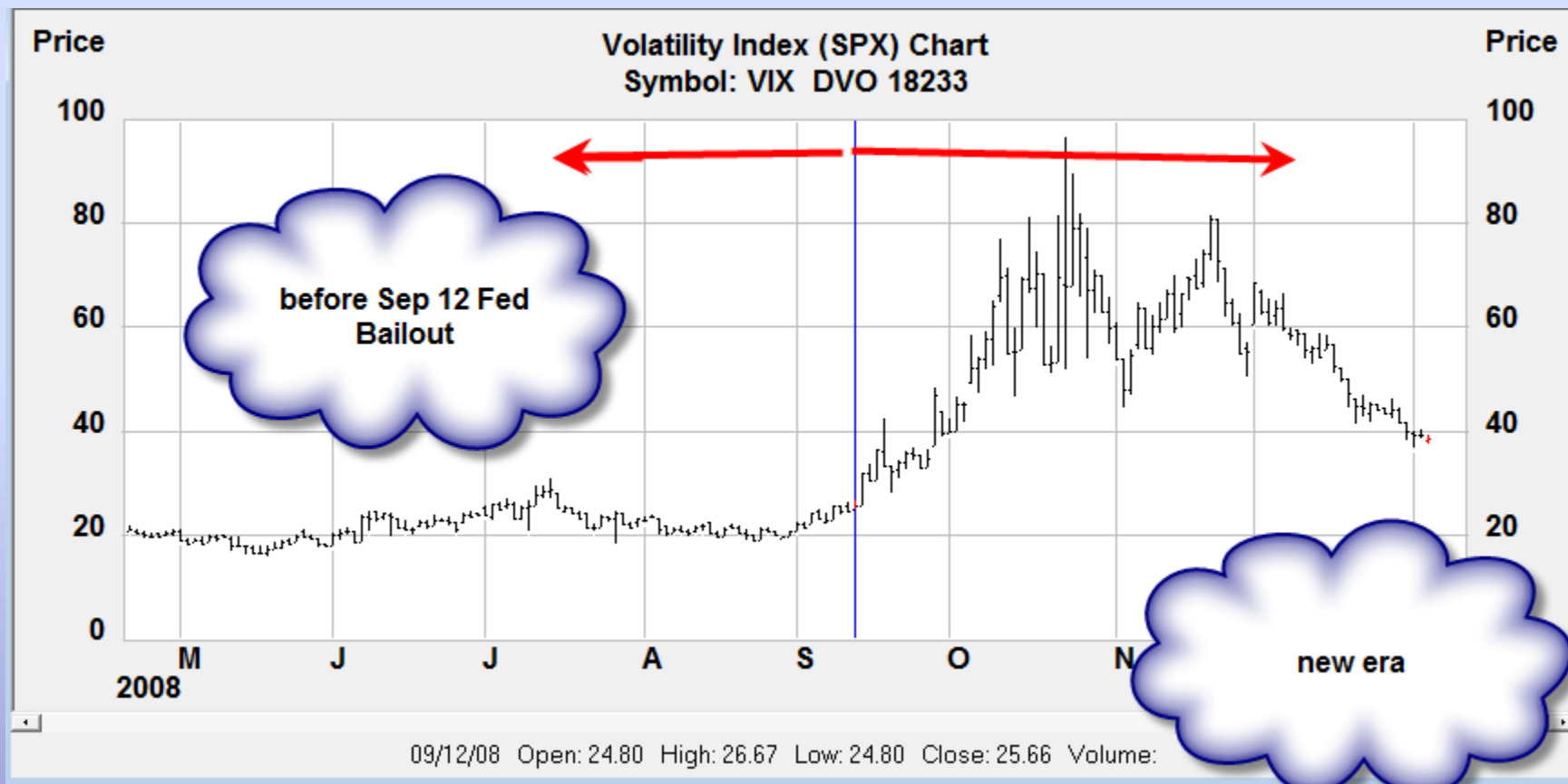
Options involve risk and are not suitable for all investors. Prior to buying or selling an option, a person must receive a copy of Characteristics and Risks of Standardized Options (ODD). Copies of the ODD are available from your broker, by calling 1-888-OPTIONS, or from The Options Clearing Corporation, One North Wacker Drive, Suite 500, Chicago, Illinois 60606. The information in this presentation is provided solely for general education and information purposes. Any strategies discussed, including examples using actual securities and price data, are strictly for illustrative and educational purposes. In order to simplify the computations, commissions and other transaction costs have not been included in the examples used in this presentation. Such costs will impact the outcome of the stock and options transactions and should be considered. Investors should consult their tax advisor about any potential tax consequences. No statement within the presentation should be construed as a recommendation to buy or sell a security or to provide investment advice.

Multiple leg strategies involve multiple commissions charges. Brokerage firms may require customers to post higher margins than the minimum margins specified in this presentation.

Acknowledgement

Screen shots of OptionVue 5 Software courtesy of OptionVue Systems International. www.optionvue.com





Tips for surviving in 2009

- ☐ Watch Portfolio Vega
- ☐ Have a plan on each trade
- ☐ Understand contingency orders
- ☐ Be aware of VIX at all times!
- ☐ Understand insurance!
- ☐ Work on the craft!



RUT Option Chain

Price: \$513.97

	FEB(46)		
Options	Price	IV	Trade
600 Calls	\$3.50	35.7%	+3
590 Calls	\$5.30	37.3%	-3
430 Puts	\$7.80	52.8%	-3
420 Puts	\$6.70	54.5%	+3

Delta	-3.6
Gamma	-0.2
Theta	17.3
Vega	-34.1

Credit	\$ 870
Margin	\$ 3,000

RUT Option Chain

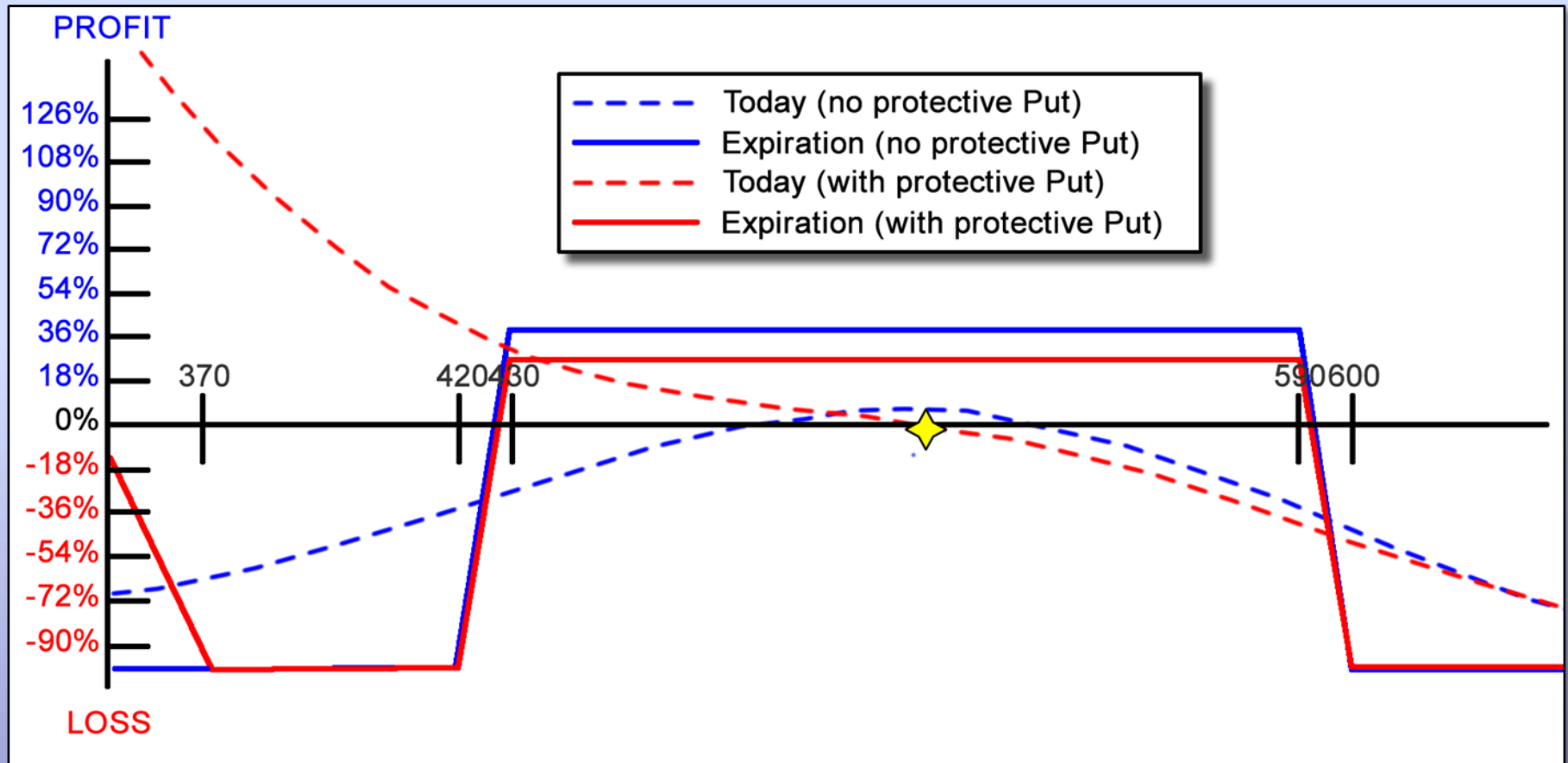
Price: \$513.97

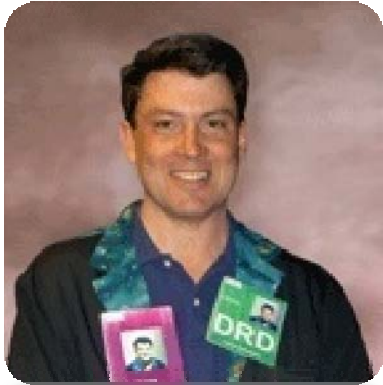
	FEB(46)		
Options	Price	IV	Trade
600 Calls	\$3.50	35.7%	+3
590 Calls	\$5.30	37.3%	-3
430 Puts	\$7.80	52.8%	-3
420 Puts	\$6.70	54.5%	+3
370 Puts	\$2.10	58.9%	+1

Delta	-8.3
Gamma	-0.2
Theta	6.1
Vega	-16.3

Credit	\$ 660
Margin	\$ 3,000

RUT Risk Chart





Dan Sheridan

+1 678-262-8898

info@SheridanMentoring.com

Sheridan Options Mentoring, Inc.

<http://www.SheridanMentoring.com/>